



WORLD CLASS INTELLIGENT SOLUTIONS | DESIGNED IN AUSTRALIA | USED THROUGHOUT THE WORLD



RACKS, CABINETS & ACCESSORIES

The connection you can count on



RACK TECHNOLOGIES

Rack Technologies is a specialist in rack system enclosures and accessories for the communications, data, electronic, security and electrical industries. The company was founded in Sydney, Australia on March 15th 1990 and was acquired by Preformed Line Products (Australia) Pty Ltd in April 2000.

The Australian market has many companies offering “part” of the range but **Rack Technologies** maintains a dominant position in most markets in which it operates due to the comprehensive range manufactured to the highest standards coupled with a continuous drive for ongoing improvement in all areas of the business from product features, design and innovation through to exceptional customer service with the aim to exceed customer expectations.

Importantly the fundamental need to provide competitive pricing and compete at all levels has not been forgotten and we are confident our range, service, price and product features combined will ensure a lower overall cost position when using any **Rack Technologies** product.

This is particularly important when considering features and accessories that aid in prolonging the life of sensitive electronic equipment installed in racks, such as Energy Management, Cooling and Aisle Containment systems that may appear as an additional up front cost but with short payback period on investment through energy and equipment life savings.



A comprehensive range manufactured to the highest standards ensures the brand is associated with many leading edge projects and highly accepted by customers at all levels.

A strong commitment to the principles of quality, service and attention to detail ensures we transform these values into unique and dynamic outcomes that are second to none. In order to attain and maintain these objectives, **Rack Technologies** has implemented a Certified Quality Management System which meets the requirements of AS/NZS ISO 9001-2016.

In summary, **Rack Technologies** is committed to providing an unrivalled product and service offer to its many valued customers.



AS/NZS ISO9001-2016:
Quality Management System.



AS/NZS 4801-2001
Occupational Health and Safety
Management Systems.



HOW OUR CATALOGUE WORKS

- 1 **Product Image** – illustration or picture of the product
- 2 **Product Description** – outline features and benefits of the product that meet your applications and projects needs
- 3 **Product Features** – highlights the capabilities and uniqueness of the product that suit your project specifications
- 4 **Door Types** – choose your cabinet door type
- 5 **Standard Inclusions** – accessories and hardware that are supplied with the cabinet
- 6 **Ordering Guide** – shows all variations of a product series with a part number and description
- 7 **Product Name**– name of the product series
- 8 **QR Code** – can be found throughout the catalogue and will take you to our website of the product series where more detailed information can be obtained including datasheets and catalogue.

DATA SHEETS

Data Sheets are now available on our website visit us online for detailed information on all our product ranges.



DISTRIBUTORS LOCATOR

A full list of where to purchase our products can be found on our website. Simply enter your location to see a full list of local distributors.





ACCESSORIES

	Page
Power Rails	40 - 43
Fan Units	44 - 45
Shelves	46
Keyboard Shelf	46
Document Holder	47
Adjustable Shelf Rails	47
Recessing Bracket	47
Cable Management	47 - 49
Cable Trays	49
Cable Entry	49
Blank Panels	50
Chimney	50

ACCESSORIES (CON'T)

	Page
Wall / Floor Mount Kit	50
Anti Tilt Bracket	51
Earthing Kit / Bar	51
Cage Nuts	51
Cabinet Plinths	51
Baying Kit	52
Levelling Feet	52
Cabinet Castors	52

OTHER SOLUTIONS

Acoustic Management	18
UPS Systems	53 - 59
Aisle Containment	60 - 63



RT PRESS

Same day dispatch*

We offer same day dispatch* on our **WR** and **RTx Series** cabinets and accessories. Look for the **RTxpress** logo through out the catalogue.

*For orders placed before 12pm Eastern Standard Time.

CABINETS & ACCESSORIES

- WR Series
- RTx Series
- Accessories

WAREHOUSE LOCATIONS

- Sydney
- Brisbane
- Townsville
- Melbourne†
- Perth

Same day dispatch and pick up for orders placed before 12pm eastern standard time are available from above warehouse locations.

†Warehouse location to be confirmed



The **WR Series** are wall mounted cabinets that are built to the highest standards with flexibility and ease of installation at the forefront of design criteria. More than 30 different sizes and door variants makes the **WR Series** one of the most comprehensive in the market.

The fully welded frame ensures a stable structure while the key lockable quick release door opens to 180 degrees and the doors are available in Acrylic, Curved Perforated or Steel.

Removable side panels complete with locks, plus plenty of cable knockouts in back, top and bottom panels ensure ease of access during wiring and fitout.

Single section cabinets are complete with a removable rear panel and installation is made simple with a quick mount rail that is fixed to the wall allowing for one person installation.

Double section cabinets come with a rear hinge section with reversible lift off hinges, again allowing for one person installation and flexibility of access and opening.

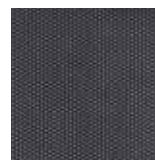
For quality and features you cannot beat the **WR Series** wall mounted cabinets.

FEATURES

- Welded body, removable sides with lock, adjustable shelf rails with RU markings
- Quick release door hinges make for ease of installation
- Reversible doors open to 180 degrees with reverse hinge
- Acrylic, Curved Perforated or Steel doors
- Curved perforated door protrudes 50mm and 70% perforation
- 19" depth adjustable mounting rail
- Top and bottom panel come with knock-outs for cable entry
- Cabinet can be fixed directly to the wall or attached to a hinge wall bracket
- Hinge wall bracket is lockable and contains knock-outs for cable entry
- Hinge wall bracket adds 100mm to the depth
- Rear hinge section can be left or right side
- Rear hinge section key lockable and has 19" provisions
- Fan and filters are available
- 100kg load capacity
- Black in colour



ACRYLIC



CURVED PERFORATED



STEEL

* Images illustrate door colour only

STANDARD INCLUSIONS

- 1 x cantilever shelf (1RU 300 depth cantilever)
- Key lock on front door
- Key locks on removable side panels
- Cable entry knockouts top, bottom and rear
- Fan vents in top
- Quick mounting rail (19" depth)
- Earth stud
- 25 cage nuts and screws
- Front and rail mounting rails

OPTIONAL

- 1 fan unit for 450 depth cabinet (9181), see page 44
- 2 fan unit for 600 depth cabinet (9182), see page 44

SINGLE SECTION WALL CABINETS

Cabinets				Doors		
RU	Height	Width	Depth	Acrylic	Perforated	Steel
4RU	280	600	450	WR6404	WR6404V	WR6404S
			450	WR6406	WR6406V	WR6406S
600	WR6606		WR6606V	WR6606S		
6RU	367		450	WR6409	WR6409V	WR6409S
			600	WR6609	WR6609V	WR6609S
9RU	500		450	WR6412	WR6412V	WR6412S
			600	WR6612	WR6612V	WR6612S
12RU	634		450	WR6418	WR6418V	WR6418S
			600	WR6618	WR6618V	WR6618S
18RU	897		450	WR6424	WR6424V	WR6424S
		600	WR6624	WR6624V	WR6624S	
24RU	1170	450	WR6424	WR6424V	WR6424S	
		600	WR6624	WR6624V	WR6624S	



QUICK MOUNT RAIL ENSURES SIMPLE MOUNTING OF CABINET



FAN VENTS IN TOP, CABLE ENTRY KNOCKOUTS IN TOP, BOTTOM AND REMOVABLE REAR PANEL



REMOVABLE SIDE PANELS WITH KEY LOCKS, FIXED SHELF INCLUDED, DEPTH ADJUSTABLE MOUNTING RAILS, DOORS EASILY REVERSED AND EARTH STUD ON BODY AND DOOR



STANDARD INCLUSIONS

- 1 x cantilever shelf (1RU 300 depth cantilever)
- Key lock on front door
- Key locks on removable side panels
- Cable entry knockouts top, bottom and rear
- Fan vents in top
- Quick mounting rail (19" depth)
- Earth stud
- 25 cage nuts and screws
- Rear hinge section supplied with hinges

OPTIONAL

- 1 fan unit for 450 depth cabinet (9181), see page 44
- 2 fan units for 600 depth cabinet (9182), see page 44

DOUBLE SECTION WALL CABINETS

Cabinets					Doors		
RU	Height	Width	Depth	Total Depth	Acrylic	Perforated	Steel
4RU	280	600	450	550*	WRH6404	WRH6404V	WRH6404S
6RU	367		450	550*	WRH6406	WRH6406V	WRH6406S
			600	700*	WRH6606	WRH6606V	WRH6606S
9RU	500		450	550*	WRH6409	WRH6409V	WRH6409S
			600	700*	WRH6609	WRH6609V	WRH6609S
12RU	634		450	550*	WRH6412	WRH6412V	WRH6412S
			600	700*	WRH6612	WRH6612V	WRH6612S
18RU	897		450	550*	WRH6418	WRH6418V	WRH6418S
			600	700*	WRH6618	WRH6618V	WRH6618S
24RU	1170		450	550*	WRH6424	WRH6424V	WRH6424S
			600	700*	WRH6624	WRH6624V	WRH6624S

NOTE: * Total Depth includes 100mm rear hinge section. Hinge assembly required.



REMOVABLE 100MM DEEP REAR HINGE SECTION WITH 19" MOUNTING FACILITY



FAN VENTS IN TOP AND CABLE ENTRY KNOCKOUTS IN TOP, BOTTOM AND REAR HINGE SECTION



REMOVABLE SIDE PANELS WITH KEY LOCKS, FIXED SHELF INCLUDED, DEPTH ADJUSTABLE MOUNTING RAILS, DOORS EASILY REVERSED AND EARTH STUD ON BODY AND DOOR

STANDARD INCLUSIONS

- Frame only
- All wall frames swing at 180°
- Most suitable for patching
- Black in colour

OPTIONAL

- Lid can be used top or bottom (sold as single unit, order 2x if for both top and bottom application)



WALL FRAMES

RU	Height	Width	Depth	Part Number
2RU	90	483	100	WF201
			200	WF202
			300	WF203
4RU	179		100	WF401
			200	WF402
			300	WF403
6RU	268		100	WF601
			200	WF602
			300	WF603

WALL FRAME LIDS

Width	Depth	Part Number	Description
483	100	WFL11	Suits 100 deep wall frame
	200	WFL21	Suits 200 deep wall frame
	300	WFL31	Suits 300 deep wall frame

VERTICAL WALL FRAMES

RU	Height	Width	Depth	Part Number
1RU	64	495	64	WV-1RU
2RU	108	495	108	WV-2RU
3RU	153	495	153	WV-3RU
4RU	197	495	197	WV-4RU

AV OPEN FRAME

RU	Height	Width	Depth	Part Number
12RU	700	510	530	AVOF5512
24RU	1232	510	530	AVOF5524

NOTE: Castors and 2x cable tray supplied as standard inclusions.



Rack Technologies RTx Series is our “off the shelf” pre configured floor standing cabinets range ready for **RTxPress delivery**. A comprehensive range encompassing more than 90 sizes and door variants ensures a cabinets to suit practically any installation.

Supplied complete with many standard features and accessories. This Series provides a high quality standard option for your network or server cabinets requirements.

The welded front and rear steel frame provides the strength required for peace of mind whilst all doors and panels are designed for ease of removal and installation ensuring uncluttered access for wiring and connection during installation.

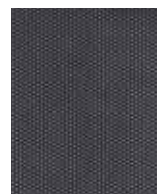
When you need a rack and need it fast... RTx is your answer.

FEATURES

- Excellent design with many standard inclusions
- Doors open to 180 degrees with quick release hinge
- Glass, Curved Perforated or Steel front door options available
- Perforated rear door (Bifold for 800mm wide cabinets)
- 70% perforation on perforated doors
- Swing handle with lock for doors
- 19” depth adjustable mounting rail with RU markings
- Side panels fitted with round locks are easy to fit and remove
- Top panel with multiple cable entry knockouts
- Bottom panel with adjustable cable entry panels
- 800kg static load capacity (on levelling feet)



GLASS



PERFORATED



CURVED
PERFORATED



STEEL

* Images illustrate door colour only

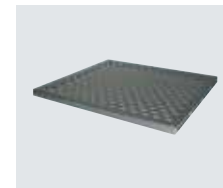
STANDARD INCLUSIONS

All **RTx Series** come with these standard inclusions. The part numbers below are the complete cabinets with the door style option.

- 2 x Fan Units (600 depth)
- 4 x Fan Units (800 to 1200 depth)
- 2 fixed Shelves (12RU to 27RU)
- 3 fixed Shelves (37RU to 45RU)
- 1 x 8 way Horizontal PDU
- 2 Cable Trays (150 wide)
- 2 x Vertical Cable Duct with 800 wide cabinet
- 25 cage nuts
- Earth kit
- Castors (for transport)
- Levelling feet
- Swing handle with lock for both front and rear door
- Small round lock for side panels
- Baying kit
- Top and bottom panel

Cabinets				Doors		
RU	Height	Width	Depth	Glass	Perforated	Steel
12RU	718*	600	600	RTX6612G	RTX6612V	RTX6612S
			800	RTX6812G	RTX6812V	RTX6812S
18RU	985*	600	600	RTX6618G	RTX6618V	RTX6618S
			800	RTX6818G	RTX6818V	RTX6818S
			1000	RTX6018G	RTX6018V	RTX6018S
22RU	1161*	600	600	RTX6622G	RTX6622V	RTX6622S
			800	RTX6822G	RTX6822V	RTX6822S
			1000	RTX6022G	RTX6022V	RTX6022S
27RU	1383*	600	600	RTX6627G	RTX6627V	RTX6627S
			800	RTX6827G	RTX6827V	RTX6827S
		800	1000	RTX6027G	RTX6027V	RTX6027S
			800	RTX8827G	RTX8827V	RTX8827S
37RU	1825*	600	600	RTX6637G	RTX 6637V	RTX6637S
			800	RTX6837G	RTX6837V	RTX6837S
			1000	RTX6037G	RTX6037V	RTX6037S
		800	800	RTX8837G	RTX8837V	RTX8837S
1000	RTX8037G		RTX8037V	RTX8037S		
42RU	2044*	600	600	RTX6642G	RTX6642V	RTX6642S
			800	RTX6842G	RTX6842V	RTX6842S
			1000	RTX6042G	RTX6042V	RTX6042S
		800	1200	RTX6242G	RTX6242V	RTX6242S
			800	RTX8842G	RTX8842V	RTX8842S
			1000	RTX8042G	RTX8042V	RTX8042S
45RU	2177*	600	600	RTX6645G	RTX6645V	RTX6645S
			800	RTX6845G	RTX6845V	RTX6845S
			1000	RTX6045G	RTX6045V	RTX6045S
		800	1200	RTX6245G	RTX6245V	RTX6245S
			800	RTX8845G	RTX8845V	RTX8845S
			1000	RTX8045G	RTX8045V	RTX8045S
			1200	RTX8245G	RTX8245V	RTX8245S

NOTE: *Height includes castors (72mm)



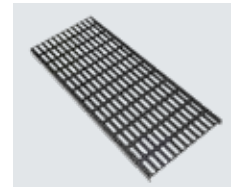
SHELVES



POWER RAIL



FAN UNIT



CABLE TRAYS



VERTICAL CABLE DUCT
(WITH 800 WIDE CABINET)



LEVELLING FEET



CASTORS
(72MM HIGH)



EARTH KIT



CAGE NUTS



BAYING KIT

BENEFITS OF SERVER RACK CABINETS

The most essential component of your network is definitely your server and should be protected and maintained. Technically, you can simply put your server on an office desk and it will work, however if you want to get the most of it, then you should store it in a server rack cabinet. The same applies for your other IT equipment. Most likely, it is stored in an office closet or a shelf, but know that storing your IT gear in server rack cabinets does more than make your office organized and tidy. Simply said, server rack cabinets minimize safety risks and prolong the life of your network. Before you start browsing online for server rack for your office, read below the three major benefits server racks offer.

- Hi flow perforated doors
- Vertical and horizontal cable management
- Roof or rack mounted Fan trays
- Power rails (basic or monitored)
- Keyboard trays
- Fixed or sliding shelves
- Joining kits
- Blanking panels and more

INCREASED PERFORMANCE



If you want your servers to work properly you need constant airflow. If something obstructs the flow of air to a server, then the performance will be greatly reduced, the temperature will increase and you may face the overheating of your server. Even if you keep your servers on a desk, they still may be moved up against a wall or other equipment, which will also lead to blocked airflow. Server rack cabinets are designed to keep your servers and other IT equipment securely in place and to maximize airflow. If the airflow is your priority, purchase the server rack with a cooling system.

EASY MAINTENANCE



If you keep your servers and other IT equipment stored on server racks, they will be easy to maintain. Cables will be organized (so, no more tangling) and every component of your network will be in the right place, thanks to the exceptional design of server rack cabinets. Many server rack cabinets are fitted with wheels which is very favoured way to access the server. When it comes to network equipment, proper maintenance is a key to long service life and proper operation. This requires easy access, which is enabled by server rack cabinets. Server racks allow you or an IT technician to easily solve any network-related problem in time to ensure impeccable network performance.

INCREASED SECURITY



Does everyone in your company have access to all company network equipment including laptops, servers, etc.? If this is the case, but you do not like the idea of everyone having a full access to all company data, get server rack cabinets. There are models that feature locks and protective doors, so your IT equipment will be safe. All of these features will help you get the most out of the servers. It's difficult to recommend just one server rack cabinet style because they can be easily customised to meet your specific needs. Here are just some of the features that can be either added or removed to ensure you get the right server rack.



CONTACT RACK TECHNOLOGIES FOR FURTHER ASSISTANCE ON PRODUCT AND PROJECT NEEDS.
CALL US **1300 550 322** OR EMAIL SALES@RACK-TECH.COM OR VISIT WWW.RACKTECHNOLOGIES.COM.AU



RT SERIES II

CABINETS & ACCESSORIES

- Product Features
- Acoustic Kit
- Open Frame Cabinet
- Design Your Cabinet

RT Series II is a fully customisable design which allows for hundreds of variations in size and panel configuration. These cabinets are designed around the **iQ** cable management system that controls cable bend radius with the vertical finger design, which also accommodates large volumes of patch cables that travel vertically within the enclosure.



APPLICATIONS

- IT Server / Networking
- Data
- Colocation
- Office / Commercial
- AV & Security

FLEXIBLE SOLUTIONS

- Acoustic Management (see page 18)
- Fully customisation (see pages 20 to 21) for standard configurations



- Large cable access entry in the roof provides access for overhead cable egress

- **OPTIONAL:** 3 point locking can be retrofitted to any doors for additional security



- A fully customisable design allows for hundreds of variations in size and panel configuration
- Side panel with ventilation at the bottom allow passive air flow through the cabinet
- Cabinet is designed with strength and flexibility which can take up to 1000kg static load capacity



STANDARD INCLUSIONS

- Cabinet frame
- Front and rear mounting rails
- Levelling feet (set of 4)
- RU lables x 2 front only



- Doors have quick release hinges and latches for ease of installation, and can be left or right hand hinged
- Doors available in acrylic, perforated, curved perforated or steel options
- Available in black as standard



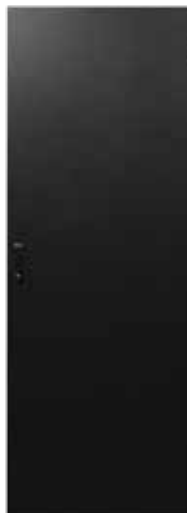
- Fully adjustable mounting rails with RU markings on front and back for quick installation
- Vertical power rails can be mounted on uprights
- Vertical cable manager available as accessories



- Available door options



Acrylic Door



Steel Door



Perforated Door

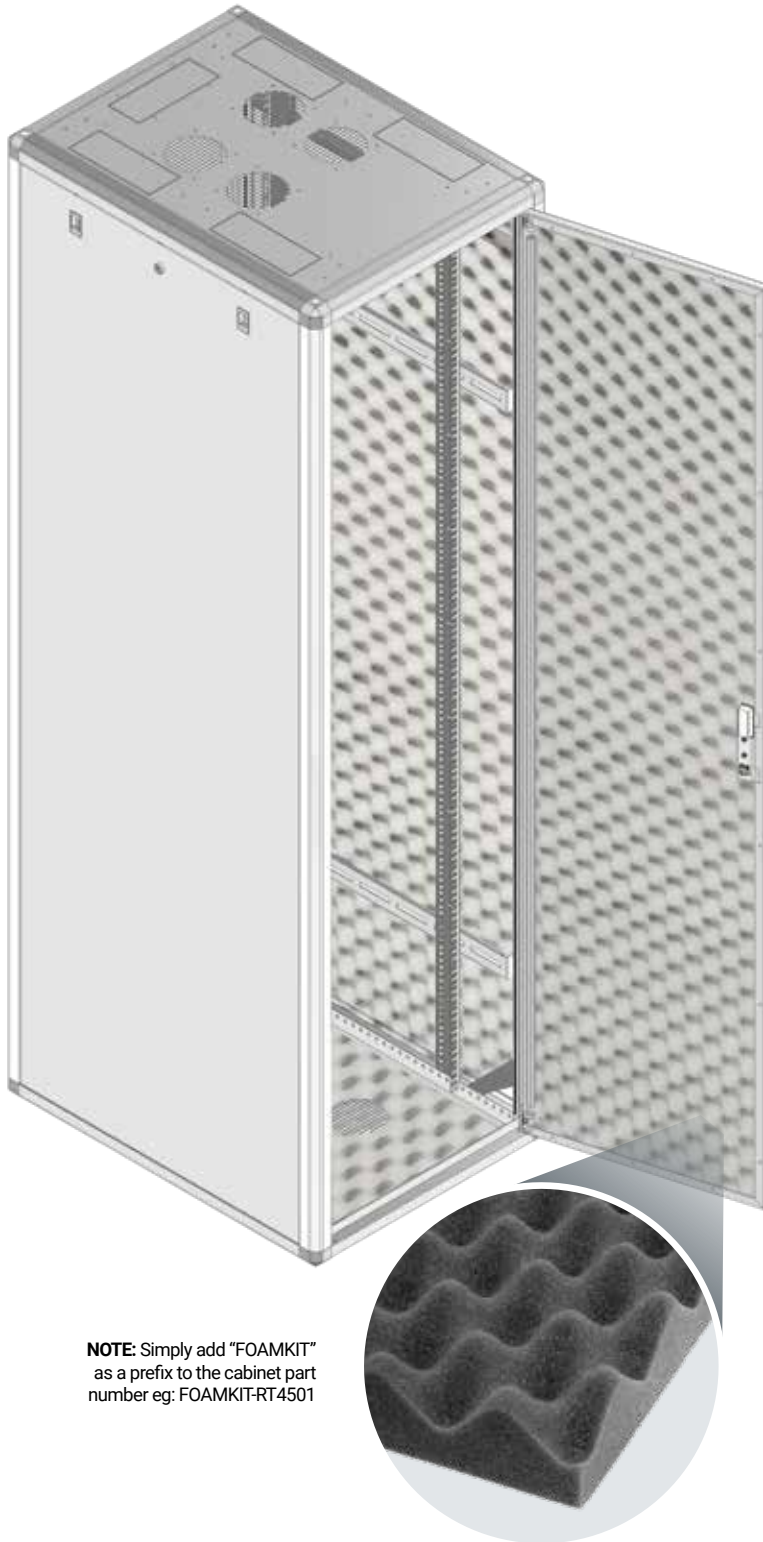


Curved Perforated Door



Bifold Perforated Door

* Images illustrate door colour only



NOTE: Simply add "FOAMKIT" as a prefix to the cabinet part number eg: FOAMKIT-RT4501

ACOUSTIC KIT

RT Series II cabinets are supplied with an acoustic foam kit which is ideal for environments where people work in a close proximity to cabinets populated with noisy IT equipment such as servers, switches, UPS. The Acoustic cabinet is designed to reduce noise output and make for a more comfortable working environment.

Excess heat generated by the active equipment needs to be managed carefully. We recommend using thermostatically controlled/whisper quiet fan kits to assist with better airflow management and to ensure heat is dissipated correctly. This will allow for set temperature and speed of the fans, which also helps manage the noise level of the fans kits.

The attenuation foam reduces the decibel rating dramatically, ensuring a more pleasant and enjoyable workplace and assists in avoiding OH&S issues.

STANDARD INCLUSIONS:

- RT Series II frame W x H x D (choose your frame size)
- Equipment rails with RU marking
- Front and rear lockable solid steel doors
- Lockable and removable side panels
- Top panel
- Bottom panel
- Acoustic foam
- Levelling feet

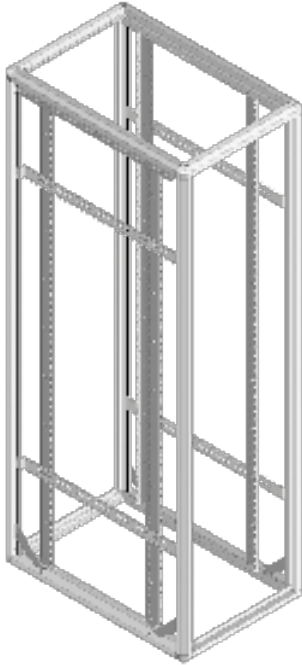
OPTIONAL ACCESSORY:

- Whisper quiet 4 Fan tray (Top or Top/bottom mount depending on application/environment)

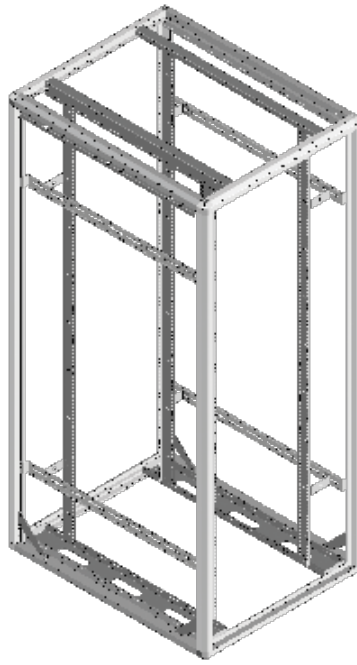


CONTACT US 1300 550 322
OR EMAIL SALES@RACK-TECH.COM

ACOUSTIC KIT CAN BE SUPPLIED WITH OTHER CABINET MODELS UPON REQUEST



600W CABINET FRAME ASSEMBLY



800W CABINET FRAME ASSEMBLY

FEATURES:

- True 600mm / 800mm wide footprint
- Durable powder-coated finish
- Modular design
- Superior weight to strength ratio
- Excellent corrosion resistance
- Fans, castors, levelling feet, cable managers, internal lights, chimney can be fitted

STANDARD CONFIGURATIONS:

Choose Height: 12RU, 18RU, 27RU, 38RU, 42RU or 45RU

Choose Depth: 600mm, 800mm, 900mm, 1000mm or 1200mm

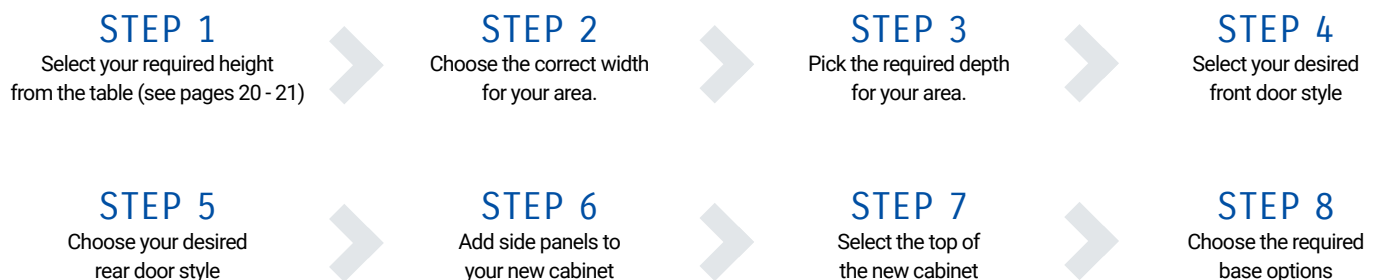
Colour: Black

OPTIONAL EXTRAS:

Doors:	See pages 20 - 21
Side Panels:	See pages 20 - 21
Top/Bottom Panels:	See pages 20 - 21
Fans:	See pages 44 - 45
Power Rails:	See pages 40 - 43
Cable Management:	See pages 47 - 48
Accessories:	See pages 46 - 52

CUSTOM BUILD PROCESS

Building your custom **RT Series II** cabinet has never been easier. Simply select your component part numbers from the table (see pages 20 - 21). Email your enquiry to our friendly staff sales@rack-tech.com or **build your own** @ racktechnologies.com.au and we will get back to you with a quote.



Cabinets					Doors					Side Panel	Top Panel	Base		
RU	Height	Width	Depth	Frame	Acrylic	Perforated	Curved Perforated	Steel	Bi-Fold*	Vented	Standard	Plinth	Gland Plate	Castors
12RU	656	600	600	RT1203	RT1211	RT1223	RT1223-CURVED	RT1221	RT12YY-BIFOLD*	RT1233	RT4583	RT9051	9232-RB	9040-M
			800	RT1204						RT1234	RT4584	RT9052		
			900	RT1210						RT1236	RT4589	RT9151		
			1000	RT1201						RT1238	RT4591	RT9153		
			1200	RT1208						RT1239	RT4596	RT9174		
		800	600	RT1205	RT1212	RT1214	RT1214-CURVED	RT1222	RT12YY-BIFOLD*	RT1233	RT4585	RT9150	9232-RB	9040-M
			800	RT1206						RT1234	RT4586	RT9069		
			900	RT1200						RT1236	RT4590	RT9152		
			1000	RT1207						RT1238	RT4592	RT9156		
			1200	RT1209						RT1239	RT4595	RT9175		
18RU	925	600	600	RT1803	RT1811	RT1823	RT1823-CURVED	RT1821	RT18YY-BIFOLD*	RT1833	RT4583	RT9051	9232-RB	9040-M
			800	RT1804						RT1834	RT4584	RT9052		
			900	RT1810						RT1836	RT4589	RT9151		
			1000	RT1801						RT1838	RT4591	RT9153		
			1200	RT1808						RT1839	RT4596	RT9174		
		800	600	RT1805	RT1812	RT1814	RT1814-CURVED	RT1822	RT18YY-BIFOLD*	RT1833	RT4585	RT9150	9232-RB	9040-M
			800	RT1806						RT1834	RT4586	RT9069		
			900	RT1800						RT1836	RT4590	RT9152		
			1000	RT1807						RT1838	RT4592	RT9156		
			1200	RT1809						RT1839	RT4595	RT9175		
27RU	1325	600	600	RT2703	RT2711	RT2723	RT2723-CURVED	RT2721	RT27YY-BIFOLD*	RT2733	RT4583	RT9051	9232-RB	9040-M
			800	RT2704						RT2734	RT4584	RT9052		
			900	RT2710						RT2736	RT4589	RT9151		
			1000	RT2701						RT2738	RT4591	RT9153		
			1200	RT2708						RT2739	RT4596	RT9174		
		800	600	RT2705	RT2712	RT2714	RT2714-CURVED	RT2722	RT27YY-BIFOLD*	RT2733	RT4585	RT9150	9232-RB	9040-M
			800	RT2706						RT2734	RT4586	RT9069		
			900	RT2700						RT2736	RT4590	RT9152		
			1000	RT2707						RT2738	RT4592	RT9156		
			1200	RT2709						RT2739	RT4595	RT9175		

NOTE: *BI-FOLD DOOR STYLE: YY = width (mm) and type:

11 = 600 wide - acrylic | 21 = 600 wide - steel | 23 = 600 wide - perforated | 12 = 800 wide - acrylic | 22 = 800 wide - steel | 14 = 800 wide - perforated

*PRIVACY SIDE PANEL STYLE: Simply add "PP" to standard side panel part number i.e. RT2739-PP

Cabinets					Doors					Side Panel	Top Panel	Base		
RU	Height	Width	Depth	Frame	Acrylic	Perforated	Curved Perforated	Steel	Bi-Fold*	Vented	Standard	Plinth	Gland Plate	Castors
38RU	1815	600	600	RT3803	RT3811	RT3823	RT3823 - CURVED	RT3821	RT38YY - BIFOLD*	RT3833	RT4583	RT9051	9232-RB	9040-M
			800	RT3804						RT3834	RT4584	RT9052		
			900	RT3810						RT3836	RT4589	RT9151		
			1000	RT3801						RT3838	RT4591	RT9153		
			1200	RT3808						RT3839	RT4596	RT9174		
		800	600	RT3805	RT3812	RT3814	RT3814 - CURVED	RT3822	RT38YY - BIFOLD*	RT3833	RT4585	RT9150	9232-RB	9040-M
			800	RT3806						RT3834	RT4586	RT9069		
			900	RT3800						RT3836	RT4590	RT9152		
			1000	RT3807						RT3838	RT4592	RT9156		
			1200	RT3809						RT3839	RT4595	RT9175		
42RU	1992	600	600	RT4203	RT4211	RT4223	RT4223 - CURVED	RT4221	RT42YY - BIFOLD*	RT4233	RT4583	RT9051	9232-RB	9040-M
			800	RT4204						RT4234	RT4584	RT9052		
			900	RT4210						RT4236	RT4589	RT9151		
			1000	RT4201						RT4238	RT4591	RT9153		
			1200	RT4208						RT4239	RT4596	RT9174		
		800	600	RT4205	RT4212	RT4214	RT4214 - CURVED	RT4222	RT42YY - BIFOLD*	RT4233	RT4585	RT9150	9232-RB	9040-M
			800	RT4206						RT4234	RT4586	RT9069		
			900	RT4200						RT4236	RT4590	RT9152		
			1000	RT4207						RT4238	RT4592	RT9156		
			1200	RT4209						RT4239	RT4595	RT9175		
45RU	2125	600	600	RT4503	RT4511	RT4523	RT4523 - CURVED	RT4521	RT45YY - BIFOLD*	RT4533	RT4583	RT9051	9232-RB	9040-M
			800	RT4504						RT4534	RT4584	RT9052		
			900	RT4510						RT4536	RT4589	RT9151		
			1000	RT4501						RT4538	RT4591	RT9153		
			1200	RT4508						RT4539	RT4596	RT9174		
		800	600	RT4505	RT4512	RT4514	RT4514 - CURVED	RT4522	RT45YY - BIFOLD*	RT4533	RT4585	RT9150	9232-RB	9040-M
			800	RT4506						RT4534	RT4586	RT9069		
			900	RT4500						RT4536	RT4590	RT9152		
			1000	RT4507						RT4538	RT4592	RT9156		
			1200	RT4509						RT4539	RT4595	RT9175		



FLAT PACK
OPTION AVAILABLE

RT ACCESSORIES
See pages 22 to 35

RACKS VERSUS CABINETS

During the past decade data centres have been affected by significant transformations which are mainly driven by the proliferation of new technological waves. Efficiency have been their core focus across all areas and there has been a substantial shift towards the adoption of enclosed cabinets as opposed to open frame racks.

While there is no right or wrong decision when it comes to choosing an enclosed cabinet versus an open frame rack, it's worth considering the pros and cons of both. Despite the latest trend towards using enclosed cabinets, open frame racks still present a perfectly viable solution for many data centre deployments and can address a variety of applications; from supporting active equipment (switches and servers) to simply providing a cable patching platform.

“CHOOSING THE RIGHT OPTION FOR AN INSTALLATION OFTEN COMES DOWN TO A BALANCE BETWEEN EFFICIENCY AND THE SPECIFIC REQUIREMENTS OF INDIVIDUAL PROJECTS”

OPEN FRAME RACKS – ADVANTAGES

Cost probably is the number one reason for selecting an open frame rack versus an enclosed cabinet. A complete rack solution, inclusive of cable management accessories, can be as little as 1/2 or even 1/3 of the cost of an equivalent enclosed cabinet configuration.

Secondly, open frame racks are designed to provide unobstructed airflow while at the same time granting easy access to the equipment or cabling as they do not have side panels or walls which make access a lot easier, even when active equipment and cables have already been installed.

Thirdly, two post open frame racks provide the most efficient use of floor space in the data centre and four post open frame racks are a suitable choice for supporting larger and heavier equipment, includes modular network switches because they provide front and rear support and greater stability.

Finally, open frame racks offer the optimum cable management solution for any given installation as access are not restricted by side panels or walls, so it's possible to use wide and deep vertical cable managers along both sides of the frame, offering the perfect cable management solution.

OPEN FRAME RACKS – DISADVANTAGES

Lack of security and poor aesthetics can be a consequence of the cost savings achieved using an open frame rack solution. Additionally, the active equipment is exposed to dirt and debris that can cause damage to the fans and other accessories. Furthermore, with equipment, cables and cable managers all clearly visible, they can create an unpleasant appearance, especially if they're poorly maintained.

ENCLOSED CABINETS – ADVANTAGES

The two key reasons for choosing an enclosed cabinet are airflow management and security. As the demand on technologies surrounding cloud computing and storage are increasing, this leads to increase of equipment density per rack as well as its associated cooling requirements. With the use of built-in features and specific design geometries it is possible to create an almost perfect separation between hot air and cold air, improving cooling efficiency. Enclosed cabinets offer the best and most simple approach to a variety of air segregation strategies include:

- Cabinet level containment
- Cold Aisle Containment
- Hot Aisle Containment

Enclosed cabinets also provide a much higher level of physical security as opposed to open frame racks. Different types of locking systems are available for protection from unauthorised entry and offer a much safer environment for keeping sensitive data.

ENCLOSED CABINETS – DISADVANTAGES

Enclosed cabinets made maintenance operations difficult due to the restricted accessibility and high ownership cost are prohibitive for many data centres, especially for a small operation or start-up.

MAKING THE BEST CHOICE

When comparing open frame racks to enclosed cabinets, it's important to consider all the factors that will play a major role in the lifetime of the installation and choose the solution that will best serve the core requirements. Fundamentally, an enclosed cabinet will always provide greater security and better control of airflow, but an open frame rack can still be a viable alternative when it comes to housing a moderate amount of IT equipment or used as a main patching frame. Open frame racks are cost-effective, easily accessible and durable, which makes them a sound option for telecom equipment, servers or networking with a relative low power load where cooling requirements are not a major concern.



iQ SERIES

CABINETS & ACCESSORIES

- Product Features
- Accessories
- iQ Open Frame
- Cable Management

iQ Series is a highly versatile 19" cabinet providing quality solutions ideal for a variety of applications.



APPLICATIONS

- IT Server / Networking
- Data Centre
- Colocation
- Office / Commercial
- AV & Security

FLEXIBLE SOLUTIONS

Cabinets are aisle containment ready with necessary mounting holes in place for optional at extra cost accessories including:

- Vertical air dams
- Mass cable management
- Base plates



- Roof can be removed for access during installation or even with cabling already in place
- Roof is reversible to reposition the larger cable entries for power distribution plugs and connectors
- Large cable access points in the roof provides access for overhead cable egress. The bottom design allows for unobstructed cable access through a raised floor



- Half height, quick release side panels help to reduce size and weight for easy handling and access to equipment
- Side panels are lockable using a single key provided



- A proven frame design with heavy-gauge mounting rails that provide ratings for static loads (1400 kg with levelling feet) and dynamic loads (1000 kg with castors)
- Castors are sold separate and levelling feet are supplied as standard



STANDARD INCLUSIONS:

- Curved perforated front door
- Split rear perforated door
- Split side panels
- Top Panels
- Front and rear mounting rail
- Levelling feet

TOP PANEL CUT OUT DIMENSIONS:

600 width cabinet

800 depth - 1 off 130 x 448mm, 3 off 100 x 100mm, 2 off 60mm diameter
 1000 & 1200 depth - 2 off 130 x 448mm, 6 off 100 x 100mm, 4 off 60mm diameter

800 width cabinet

800 depth - 1 off 448 x 130mm, 4 off 203 x 76mm
 1000 & 1200 depth - 2 off 448 x 130mm, 6 off 203 x 76mm



- Vertical mounting rails can be adjusted covering virtually any mounting equipment
- Tool less adjustment feature integrated into the cabinet for quick alignment
- RU positions are numbered front and back for quick equipment installation
- Vendor-neutral mounting for compatibility with all EIA-310 compliant 19" equipment

- Doors feature a simple lift off design and can be moved to the opposite side or interchanged with rear doors
- Curved Perforated front door provides a modern appearance and practical ventilation solution
- Split rear doors improve access and serviceability to rear of rack mounted equipment
- Perforated front and rear doors provide ample ventilation for servers and networking equipment
- Available in black as standard, light grey or white colour are available upon request with MOQ



- Integrated Earthing system on Frame, Roof, Sides and mounting rails using contacts that require no wiring or connection / disconnection.
- Front and rear doors are earthed using wiring supplied

 ALSO AVAILABLE IN LIGHT GREY

 ALSO AVAILABLE IN WHITE

 FLAT PACK OPTION AVAILABLE

Cabinets	Height (mm)			Width (mm)	Depth (mm)		Part Number
	RU	On Frame	On Levelling Feet		On Castors	Frame to Frame	
42RU	1946	1955	1994	600	1000	1090	IQS6042V
	1946	1955	1994	600	1200	1290	IQS6242V
	1946	1955	1994	800	800	890	IQS8842V
	1946	1955	1994	800	1000	1090	IQS8042V
	1946	1955	1994	800	1200	1290	IQS8242V
45RU	2079	2099	2127	600	1000	1090	IQS6045V
	2079	2099	2127	600	1200	1290	IQS6245V
	2079	2099	2127	800	800	890	IQS8845V
	2079	2099	2127	800	1000	1090	IQS8045V
	2079	2099	2127	800	1200	1290	IQS8245V
47RU	2166	2188	2216	600	1000	1090	IQS6047V
	2166	2188	2216	600	1200	1290	IQS6247V
	2166	2188	2216	800	1000	1090	IQS8047V
	2166	2188	2216	800	1200	1290	IQS8247V

NOTE: *Cabinets supplied with curved front door, split rear door, two side panels and levelling feet as standard inclusions.

iQ SERIES ACCESSORIES

Part Number	Description
IQS9501	IQS Caster wheels (set of 4)
IQS9502	IQS Rack Bolt Down Kit (set of 2)
IQS9503	IQS Baying Kit (set of 4)
IQS9504	IQS Vertical PDU/ Cable Management Tray 42U
IQS9505	IQS Vertical PDU/ Cable Management Tray 45U
IQS9506	IQS Vertical Cable Manager with 3.25" Hoops 42U
IQS9507	IQS Vertical Cable Manager with 3.25" Hoops 45U
IQS9508	IQS Vertical Cable Management with 6" Finger Guide 21U Single Row (set of 2)
IQS9509	IQS Vertical Cable Management with 6" Finger Guide 21U Double Row (set of 2)
IQS9510	IQS Base Plate 600 x 1000 Black
IQS9511	IQS Base Plate 600 x 1200 Black
IQS9530	IQS Base Plate 800 x 800 Black
IQS9512	IQS Base Plate 800 x 1000 Black
IQS9513	IQS Base Plate 800 x 1200 Black
IQS9514	IQS Brush Cable Entry 93 x 228 for 800W Top Panel
IQS9515	IQS Brush Cable Entry 482 x 165 - 600W & 800W Cabinet Top Panel

Part Number	Description
IQS9516	IQS Side Channel Cover (Cut-out 45 x 280) 800W-42U with Plastic Cover Assy
IQS9517	IQS Side Channel Cover (Cut-out 45 x 280) 800W-45U with Plastic Cover Assy
IQS9518	IQS Cable Entry Brush Strip Plate Black
IQS9519	IQS Side Channel Cover (1 x Cut-out 85 x 830) 800W-42U with Brush Assy
IQS9520	IQS Side Channel Cover (1 x Cut-out 85 x 830) 800W-45U with Brush Assy
IQS9521	IQS Roof Mount Fan Tray (3 Fans) 220V (includes T30 Screw and AC Power Cord)
IQS9522	IQS Vertical Cable Management with 6" Finger Guide 22.5U Single Row (set of 2)
IQS9523	IQS Vertical Cable Management with 6" Finger Guide 22.5U Double Row (set of 2)
IQS9525	IQS Side Horizontal Cable Management 1000-1200D
IQS9526	IQS Cable Manager Cover for IQS9523 (set of 2)
IQS9527	IQS Brush Cable Entry 115 x 115 for 600W Top Panel
IQS9528	IQS Plinth Base 800W 1000D x 100H
IQS9529	IQS Plinth Base 800W 1200D x 100H

NOTE: Accessories only suitable for iQ series cabinet, for other series see pages 39 - 52



2 POST FRAME ASSEMBLY

4 POST FRAME ASSEMBLY

iQ OPEN FRAME

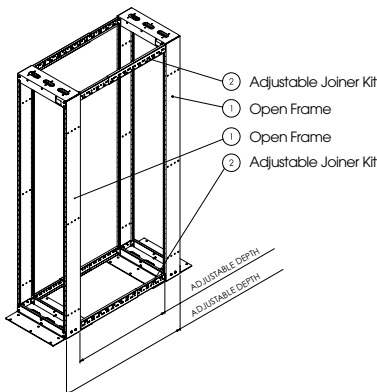
The **iQ Open Frame Series** has been designed specifically for high density cabling and patching applications associated with communications rooms and data centres.

There are several cable management options available utilising the **Rack Technologies T-Finger** design. The vertical cable managers are available in widths of 150mm, 300mm and 400mm.

The **iQ Open Frame Rack** can be bayed as many times as required in conjunction with the vertical cable management system. The 2-way hinged door cover design allows for ease of cable management as well as a neat and tidy finish. The **iQ Series 2-post** open frame has a 500kg load rating (dependent on application), while 4- post open frames have a 1000kg load rating. Standard colour is Black

iQ OPEN FRAME SYSTEM

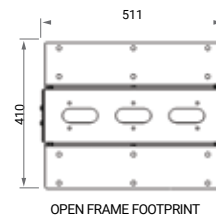
RU	Height	Width	Depth	Frame
38RU	1748	515	145	iQOF3801
45RU	2150			iQOF4501
52RU	2462			iQOF5201



ADJUSTABLE JOINER KIT

The adjustable joiner kit is used to join the frames together, turning a 2-post frame into a 4-post frame. The kit allows you to manually adjust the depth of the rack to accommodate your equipment.

Part No.	Description
iQOF9511	Adjustable Joiner Kit for 600mm to 1000mm
iQOF9514	Adjustable Joiner Kit for 400mm to 600mm



2-POST OPEN FRAME WITH CABLE MANAGERS

4-POST OPEN FRAME WITH CABLE MANAGERS

CABLE MANAGEMENT

The T-Finger Vertical Cable Management System is designed to handle high density cabling for termination or patching applications.

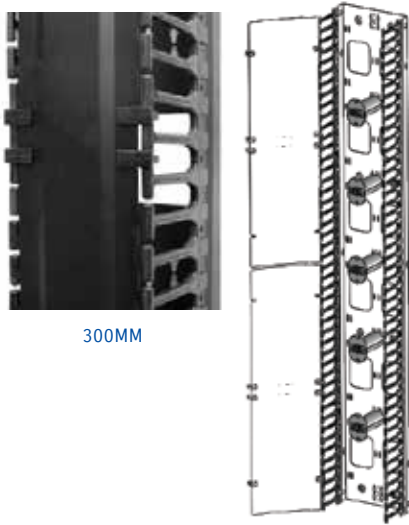
This system ensures neat cabling as well as adherence to bend radius requirements. A hinged door cover conserves any unsightly cables and has the ability to swing left or right for ease of cable installation.

The T-Fingers on our managers are mounted in 2RU increments and can be removed to allow the bending and entry of larger cable bundles via the top or bottom, left or right. The fingers are available in 2 (two) lengths - 93mm and 146mm. See pages 28 - 29 for cable management.

NOTE: iQ open frame only available in flat pack, assembly required.

VERTICAL CABLE MANAGEMENT (iQ OPEN FRAME)

Vertical cable managers can be supplied with either a basic cover including plastic clips which attached directly to the vertical T finger (**IQOF**) or a dual swing door with 2 point latching mechanism which is a standalone design that is separate to the vertical T finger (**IQSOF**)



300MM

IQOF

93MM T-FINGERS

RU	150mm	300mm	400mm
38RU	IQOF3820	IQOF3840	IQOF3850
45RU	IQOF4520	IQOF4540	IQOF4550
52RU	IQOF5220	IQOF5240	IQOF5250



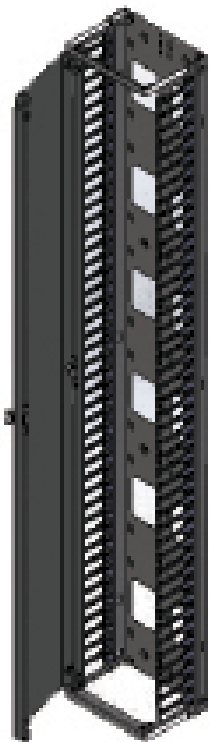
93MM

145MM T-FINGERS

RU	150mm	300mm	400mm
38RU	IQOF3820-150	IQOF3840-150	IQOF3850-150
45RU	IQOF4520-150	IQOF4540-150	IQOF4550-150
52RU	IQOF5220-150	IQOF5240-150	IQOF5250-150



145MM



IQSOF

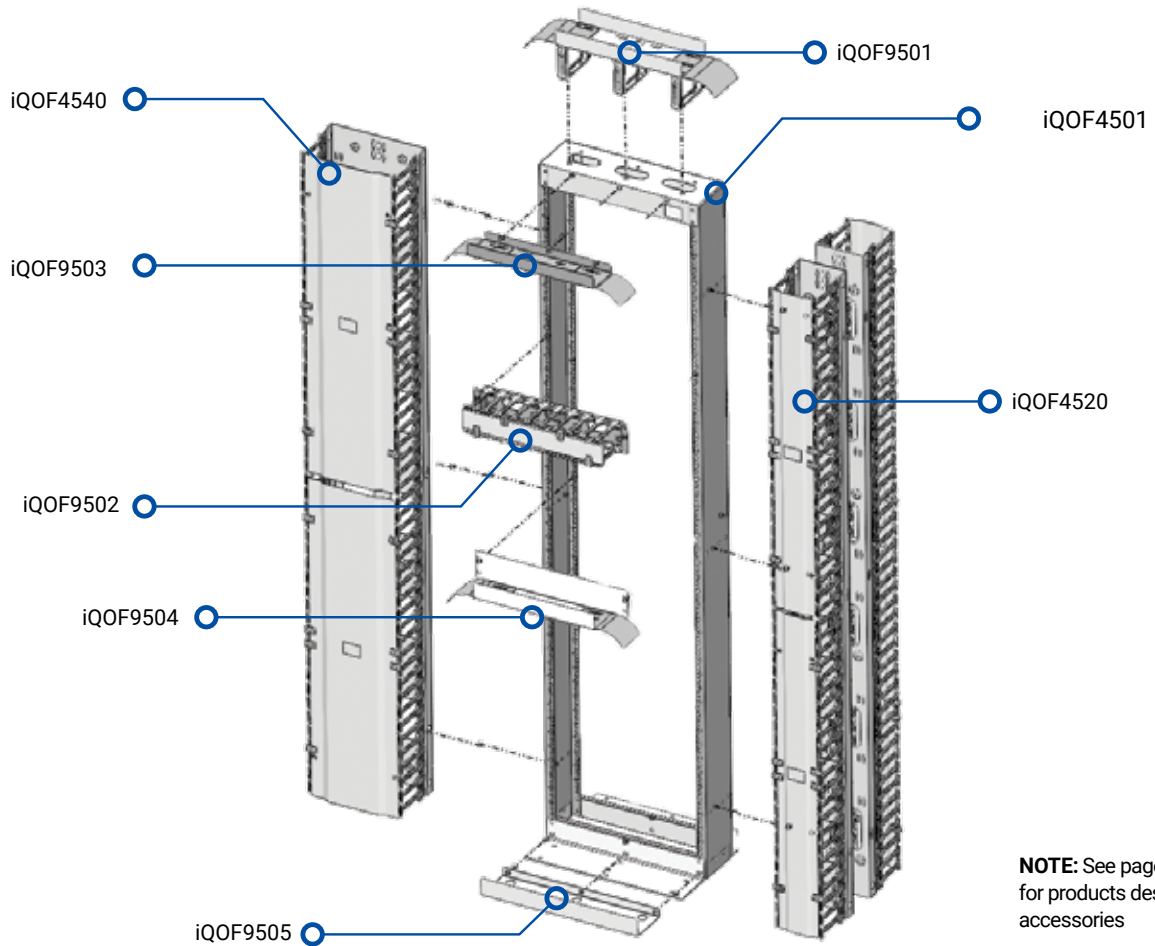
93MM T-FINGERS

RU	150mm	300mm
45RU	IQSOF4520	IQSOF4540
52RU	IQSOF5220	IQSOF5240

145MM T-FINGERS

RU	150mm	300mm
45RU	IQSOF4520-150	IQSOF4540-150
52RU	IQSOF5220-150	IQSOF5240-150

RECOMMENDED ASSEMBLY CONFIGURATION



NOTE: See pages 28 to 31 for products description and accessories



HORIZONTAL CABLE MANAGEMENT

- Supports and ensures bending radii are met
- Routing of cable to maximise capacity

93MM T-FINGERS

RU	Part Number
1RU	iQOF9509
2RU	iQOF9502
4RU	iQOF9512

146MM T-FINGERS

RU	Part Number
1RU	iQOF9509-150
2RU	iQOF9502-150
4RU	iQOF9512-150



iQOF9501



iQOF9503



iQOF9504



iQOF9505

CABLE SUPPORTS

- Supports and ensures bending radii are met
- Allows the entry of cables within 'the frame'

Part Number	Description
iQOF9501	Adjustable Top Water Fall Tray (Height adjustable to 60mm)
iQOF9503	Top Water Fall Support Tray (To route leads between managers)
iQOF9504	2RU Horizontal Cable Tray (To route leads between managers)
iQOF9505	Bottom Cable Tray (Used to take up the slack of leads)



STIFFENER PLATE

- Optional product to support open frames

Part Number	Description
iQOF9513	Used for 150mm, 300mm and 400mm (w) Managers



CABLE SLACK SPOOL

Cable slack spools are used for both copper and fibre (allowing minimum bend radius) where the slack of the cable length is to be spooled inside the vertical management channels.

Part Number	Length
iQOF9506	70
iQOF9507	140
iQOF9508	210 (For extended finger & brackets only)

VERTICAL CABLE MANAGERS FOR OPEN FRAMES

Part Number	Description	Cable Manager Spec			Recommended Cable Capacity				Maximum cable capacity			
		Interior width (mm)	Interior depth (mm)	Usable area (mm ²)	Cat 5e	Cat 6	Cat 6a	Cat 7/6a shielded	Cat 5e	Cat 6	Cat 6a	Cat 7/6a shielded
iQOFXX20	150mm wide cab/man 93mm T-fingers	131.00	173.0	22663.0	238	188	100	128	477	375	200	256
iQOFXX40	300mm wide cab/man 93mm T-fingers	281.00	173.0	48613.0	512	403	214	275	1023	805	428	550
iQOFXX50	400mm wide cab/man 93mm T-fingers	381.00	173.0	65913.0	694	546	290	373	1387	1092	581	746
iQOFXX20-150	150mm wide cab/man 146mm T-fingers	131.00	235.0	30785.0	324	255	136	174	648	510	271	348
iQOFXX40-150	300mm wide cab/man 146mm T-fingers	281.00	235.0	66035.0	695	547	291	374	1390	1094	582	747
iQOFXX50-150	400mm wide cab/man 146mm T-fingers	381.00	235.0	89535.0	942	741	394	507	1884	1483	789	1013

NOTE: XX = RU

VERTICAL CABLE MANAGERS FOR CABINETS

Part Number	Description	Cable Manager Spec			Recommended Cable Capacity				Maximum cable capacity			
		Interior width (mm)	Interior depth (mm)	Usable area (mm ²)	Cat 5e	Cat 6	Cat 6a	Cat 7/6a shielded	Cat 5e	Cat 6	Cat 6a	Cat 7/6a shielded
iQCMXX60	800mm wide cabinets 93mm T-fingers	61.5	158.5	9747.8	103	81	43	55	205	161	86	110
iQCMXX60-150	800mm wide cabinets 146mm T-fingers	61.5	220.5	13560.8	143	112	60	77	285	225	119	153

NOTE: XX = RU, IQCMXX60 only suitable for RT Series II

HORIZONTAL CABLE MANAGERS FOR CABINETS

Part Number	Description	Cable Manager Spec			Recommended Cable Capacity				Maximum cable capacity			
		Interior width (mm)	Interior depth (mm)	Usable area (mm ²)	Cat 5e	Cat 6	Cat 6a	Cat 7/6a shielded	Cat 5e	Cat 6	Cat 6a	Cat 7/6a shielded
iQOF9509	1RU horizontal cab/man 93mm T-Fingers	25.5	127	3238.5	34	27	14	18	68	54	29	37
iQOF9502	2RU horizontal cab/man 93mm T-Fingers	68	127	8636	91	72	38	49	182	143	76	98
iQOF9512	4RU horizontal cab/man 93mm T-Fingers	153	127	19431	204	161	86	110	409	322	171	220
iQOF9509-150	1RU horizontal cab/man 146mm T-Fingers	25.5	188	4794	50	40	21	27	101	79	42	54
iQOF9502-150	2RU horizontal cab/man 146mm T-Fingers	68.5	188	12878	136	107	57	73	271	213	113	146
iQOF9512-150	4RU horizontal cab/man 146mm T-Fingers	154	188	28952	305	240	128	164	609	479	255	328

NOTE: This table lists estimated cable capacity for iQ Series cable management products. Cable capacity are estimates based on 5.5mm OD Cat 5e, 6.2mm OD Cat 6, 8.5mm OD Cat 6a, 7.5mm OD Cat 7/6a shielded 4-pair UTP horizontal cable. Cable OD varies with different size cables and specific manufacturer's cable types. To calculate recommended cable capacity for other size cables, divide the product's usable area by the area of the cable and multiply by 25% (50% for maximum fill). While every effort has been made to ensure the accuracy of all information, Rack Technologies does not accept liability for any errors or omissions.



IP SERIES

The **IP Series** are powdercoated galvanised cabinets design for heavy duty outdoor applications to house sensitive data network equipment in harsh environments. They are suitable for internal and external installations. All **IP cabinets** are built to precision in Europe to ensure consistent high quality standards.

FEATURES

- Rack unit sizes available from 6RU to 18RU (wall mounted) and 27RU to 45RU (free standing)
- IP66 protection
- Body, door, mounting plate and rail are using 1.5mm galvanised steel
- Pre-fitted blind nutsets for mounting brackets and accessories removes the time for drilling during assembly or installation
- Cabinet height less than 1000mm have 3mm double bit insert quarter turn lock with key
- Cabinet height greater than 1000mm have 3 point locking system with key-lock swing handle
- Door opens to 110°
- High quality machine applied full perimeter polyurethane seal foamed in place to ensure excellent sealing
- Integrated earthing system on frame, door and mounting rails using contacts that require no wiring or connection/disconnection
- Gland plates are incorporated into the bottom face of the enclosure for cable management with gaskets and fasteners provided
- Complies with AS60529 NEMA 4 standards



CABINETS & ACCESSORIES

- Product Features
- Accessories
- MUTO Box

CLASS C&B SERIES

Rack Technologies Class C&B Series Cabinets are manufactured to the stringent standards required by the Security Construction and Equipment Committee (SCEC). These cabinets provide high-level security for data and communications equipment used in a secure network environment. **Rack Technologies Class C&B** equipment racks have been endorsed by the Security Construction and Equipment Committee (SCEC) for the protection of classified equipment applications.



APPLICATIONS

- IT Server / Networking
- Data Centre
- Colocation
- Office / Commercial
- Av & Security
- Government / Defence



- All frames are manufactured from corrosion resistant 2mm zinc annealed steel which are fully welded and load ratings up to 800kg
- Solid side panels are internally secured



- Doors are manufactured using 1.5mm corrosion resistant zinc annealed steel and perforations are maximised to improve the ability to dissipate heat
- Each SCEC endorsed door includes a 6mm anti drill plate and an independent locking mechanism and is available to solid, perforated or window door types



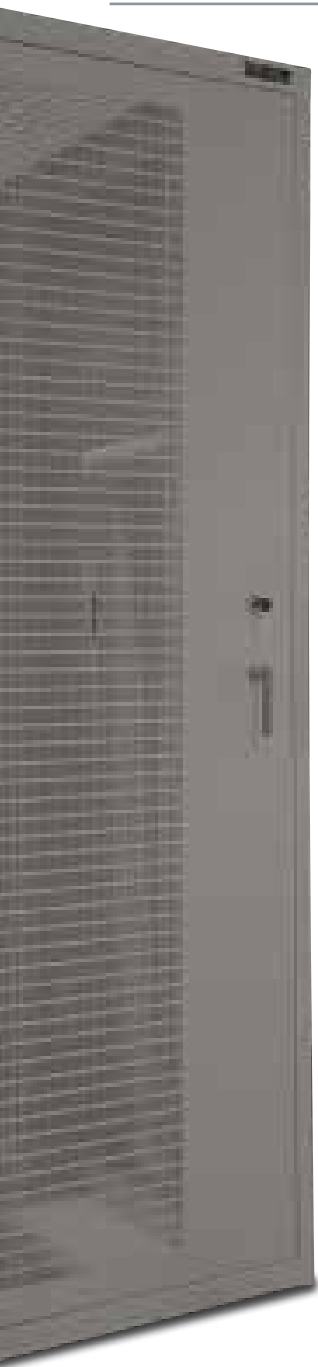
- Solid bottom panel are internally secured to provide a sturdy and stable platform to protect classified equipment applications
- Available in grey nurse as standard, black and other colours are optional
- Standard sizes are ex-stock



CLASS C & B SERIES

STANDARD INCLUSIONS

- SCEC endorsed cabinet frame with front and rear mounting rails
- Left and right solid side panel - internally secured
- Front and rear Perforated door with Class C / B lock system
- 2x PDU tray mounted at rear
- 1 x 100mm wide cable tray
- Levelling feet
- 800mm wide cabinet includes 2 x pipe baffle (XL) - fitted top rear LHS & RHS
- 600mm wide cabinet includes 1x baffle box fitted top rear



- All cabinets are come with a unique serial number that is displayed on the label and key
- Provide high level security for data and communications equipment used in secure network environments



- RU positions are numbered front and back for quick installation
- SCEC endorsed racks come with cable baffle pipe or cable baffle box as standard (depends on cabinet width, see standard inclusions above)
- PDU tray

CLASS C CABINET





CLASS B CABINET

WALL MOUNTED CABINETS

RU	Height (mm)			Width (mm)	Depth (mm)	Part Number
	On Frame	On Levelling Feet	On Castors			
Class C						
12RU	702	717	755	600	650	RTCW6612
Class B						
12RU	702	717	755	600	650	RTBW6612

FLOOR STANDING CABINETS

RU	Height (mm)			Width (mm)	Depth (mm)	Part Number
	On Frame	On Levelling Feet	On Castors			
Class C						
18RU	968	983	1022	600	800	RTC6818
42RU	2035	2050	2089	600	800	RTC6842
	2035	2050	2089	600	1050	RTC6042
	2035	2050	2089	600	1200	RTC6242
	2035	2050	2089	800	800	RTC8842
	2035	2050	2089	800	1050	RTC8042
	2035	2050	2089	800	1200	RTC8242
45RU	2169	2184	2222	600	800	RTC6845
	2169	2184	2222	600	1050	RTC6045
	2169	2184	2222	600	1200	RTC6245
	2169	2184	2222	800	800	RTC8845
	2169	2184	2222	800	1050	RTC8045
	2169	2184	2222	800	1200	RTC8245
Class B						
18RU	968	983	1022	600	800	RTB6818
42RU	2035	2050	2089	600	800	RTB6842
	2035	2050	2089	600	1050	RTB6042
	2035	2050	2089	600	1200	RTB6242
	2035	2050	2089	800	800	RTB8842
	2035	2050	2089	800	1050	RTB8042
	2035	2050	2089	800	1200	RTB8242
45RU	2169	2184	2222	600	800	RTB6845
	2169	2184	2222	600	1050	RTB6045
	2169	2184	2222	600	1200	RTB6245
	2169	2184	2222	800	800	RTB8845
	2169	2184	2222	800	1050	RTB8045
	2169	2184	2222	800	1200	RTB8245

CLASS C&B SERIES



CABLE BAFFLE BOX

CLASS C&B SERIES ACCESSORIES

Part Number	Description
RTC-BAFFLE-L800W	Class C&B Cable Raffle Large For 800W Cabinets
RTC-BAFFLE-M800W	Class C&B Cable Raffle Medium For 800W Cabinets
RTC-BAFFLE-S800W	Class C&B Cable Raffle Small For 800W Cabinets
RTC-BAFFLE-XL800W	Class C&B Cable Raffle Extra Large For 800W Cabinets
RTC-6FAN	Class C&B 6 Fan Tray Door - Roof Mount - 800W 1050 & 1200 Deep Cabinets
RTC-3FAN	Class C&B 3 Fan Tray Door - Roof Mount
RTCBF-BAYING-KIT	Class C&B Baying Kit
RTC-CM 42RU 600W	Class C&B Cab Vert CM 42RU 600W - Left & Right
RTC-CM 42RU 800W	Class C&B Cab Vert CM 42RU 800W - Left & Right
RTC-CM 45RU 600W	Class C&B Cab Vert CM 45RU 600W - Left & Right
RTC-CM 45RU 800W	Class C&B Cab Vert CM 42RU 800W - Left & Right

NOTE: Accessories only suitable for Class C&B Series cabinets, for other series see pages 39 - 52



MULTI USER TELECOMMUNICATION OUTLET (MUTO BOX)

Our secure multi user telecommunication outlets is a quality and defence ready enclosures that are ideal for Government and High Density applications. Standard configurations or customised to fit a projects specific needs. Available in a range of standard colours.

Part Number	Description
RTC-MUTO-RD	Muto Enclosure Red 150x150x44.2 – 8 x SC Duplex 3mm Clear Acrylics
RTC-MUTO-WT	Muto Enclosure White 150x150x44.2 – 8 x SC Duplex 3mm Clear Acrylics



CLASS C



CLASS B

CLASS C VS CLASS B – LOCKING MECHANISM

These cabinets provide high-level security for data and communications equipment used in a secure network environment.

Rack Technologies Class C&B equipment racks have been endorsed by the Security Construction and Equipment Committee (SCEC) for the protection of classified equipment applications.



KEY THINGS TO CONSIDER WHEN CHOOSING A RACK PDU

In their simplest form, rack power distribution units (PDUs) are designed to provide electrical protection and distribute power to networking equipment within racks/cabinets. As the needs and requirements of data centres change, so do options for rack PDU performance.

Today, there are several questions to consider before selecting rack PDUs that will work well for your data centre application.

First things first: You have to figure out what you need in a PDU. On a basic level, this means determining the maximum power throughput necessary to support current power capacities, and ideally plan ahead for future electrical loads. This is especially important considering that, industry wide, rack kW is increasing to support higher-density cabinets. While overshooting on power capacity may seem financially imprudent in the moment, it's always preferable to having to purchase entirely new equipment a few years down the road (and yes, you should definitely get more than a few years out of your PDU – a basic power rail should last a lifetime).

Likewise, consider investing in three-phase power at the rack PDU level. It's superior to single-phase for the following reasons:

1. It helps save money on wiring since three-phase power keeps amperage low and voltage high.
2. In turn, it can support overall higher power loads than single-phase.
3. Load balancing is significantly easier with three-phase than with single-phase.
4. It facilitates scalability, which, for all the reasons mentioned above and more, is vital to long-term operational efficiency.

Finally, space is one of the most important resources in any data centre. While in some cases the traditional horizontal PDU configurations will be suitable, vertical installations are preferable for high-density racks. They have a smaller footprint, require less cabling and support greater scalability.

ARE YOU LOOKING FOR SMART AND DYNAMIC, OR BASIC WITH INTEGRITY?

Modern PDUs come with varying amounts of network connectivity. For many organisations, intelligent PDUs are an asset since they enable remote power monitoring and even remote switching. On the other hand, the most security-conscious businesses may find that basic is still the way to go. To help you make your decision, we laid out the basic considerations for different types of PDUs:

- **Basic:** This is literally just a chassis with receptacles. Not much to see, but it will get the job done. Not to mention, they tend to last forever since they have fewer integrated electronic components.
- **Metered:** These PDUs typically provide a graphical user interface that displays real-time power metrics; however, they're still air-gapped from the network. This doesn't mean you have to hunch over the GUI with a pen and paper to collect power data, though. Some metered PDUs now support visible light communication (VLC). Using a secure mobile device, you can literally scan the GUI to instantaneously capture power metrics, and if necessary, export them as a report for your records.
- **Monitored:** These internet-connected PDUs let you aggregate and view real-time power metrics including voltage, current, power factor and more from an intuitive web interface. They also support interchangeable monitoring devices (IMDs) so that environmental intelligence (temperature, humidity, dew point) can be added. Monitored PDUs allow you to set well-defined thresholds, that, when breached, trigger automatic alerts to notify staff.
- **Switched:** There is no better way to manage a long-distance relationship with your data centre. Switched PDUs let you power cycle individual outlets on the strip from a web interface regardless of your location. If, for instance, you need to turn a server on and off for maintenance reasons, you can do that from a smartphone, even if you're 1,000 km's away from your facility.



ACCESSORIES

CABINETS & ACCESSORIES

- Power Rails
- Fan Units
- Other: shelves, trays, cable managers, chimney, panel, castors, nuts and brackets

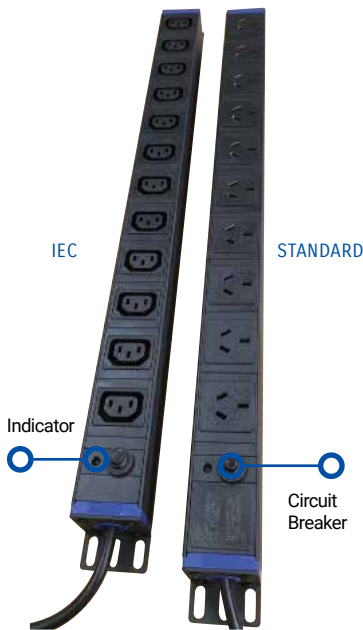
Rack Technologies can provide a wide range of accessories such as power rails which available in a variety of socket and plug configurations in both vertical and horizontal formats. Fan units that eliminate heat concerns and improve air flow in the cabinet. Others such as shelves, trays and cable managers provide a wide variety of options that suit any project specification and needs.



POWER RAILS

Reliable Power Distribution is critical in any data environment. Rack Technologies prides itself in our commitment to only supply the industry with Power Rails of the highest standards. Our range of Power Rails are manufactured to our stringent quality standards using only quality components before being load tested.

With a variety of socket and plug configurations in both Vertical and Horizontal formats there are hundreds of combinations available. The charts show our most popular "off the shelf" combinations but please contact our sales team for other requirements.

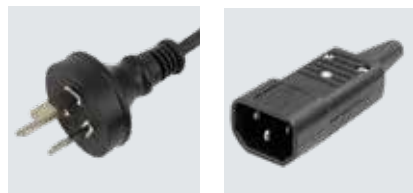


AUSTRALIAN STANDARD SOCKET POWER RAIL

Socket	Plug	Horizontal		Vertical	
		5 Way	10 Way	10 Way	20 Way
10A	10A	9001-RB	9003-RB	9004-RB	9005-RB
	15A	9001-RB-15A	9003-RB-15A	9004-RB-15A	9005-RB-15A
	10A IEC	9001-RB-C14	9003-RB-C14	9004-RB-C14	9005-RB-C14
	15A IEC	9001-RB-C20	9003-RB-C20	9004-RB-C20	9005-RB-C20
	10A Captive	9001-RB-CAP10F	9003-RB-CAP10F	9004-RB-CAP10F	9005-RB-CAP10F
	15A Captive	9001-RB-CAP15F	9003-RB-CAP15F	9004-RB-CAP15F	9005-RB-CAP15F
	20A Captive	9001-RB-CAP20F	9003-RB-CAP20F	9004-RB-CAP20F	9005-RB-CAP20F
	20A Captive	9001-RB-CAP20R	9003-RB-CAP20R	9004-RB-CAP20R	9005-RB-CAP20R

IEC SOCKET POWER RAIL

Socket	Plug	Horizontal	Vertical	
		12 Way	12 Way	20 Way
C13	10A	9012-RB	9008-RB	9009-RB
	15A	9012-RB-15A	9008-RB-15A	9009-RB-15A
	10A IEC	9012-RB-C14	9008-RB-C14	9009-RB-C14
	15A IEC	9012-RB-C20	9008-RB-C20	9009-RB-C20
	10A Captive	9012-RB-CAP10F	9008-RB-CAP10F	9009-RB-CAP10F
	15A Captive	9012-RB-CAP15F	9008-RB-CAP15F	9009-RB-CAP15F
	20A Captive	9012-RB-CAP20F	9008-RB-CAP20F	9009-RB-CAP20F
	20A Captive	9012-RB-CAP20R	9008-RB-CAP20R	9009-RB-CAP20R



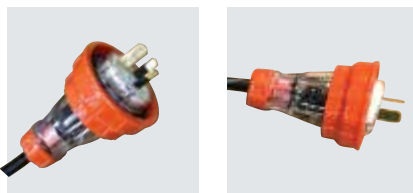
STANDARD MAINS

10A IEC (C14)



15A IEC (C20)

20A CAPTIVE ROUNDPIN



15A CAPTIVE ROUNDPIN

20A CAPTIVE FLATPIN

COMBO UNITS 20 WAY

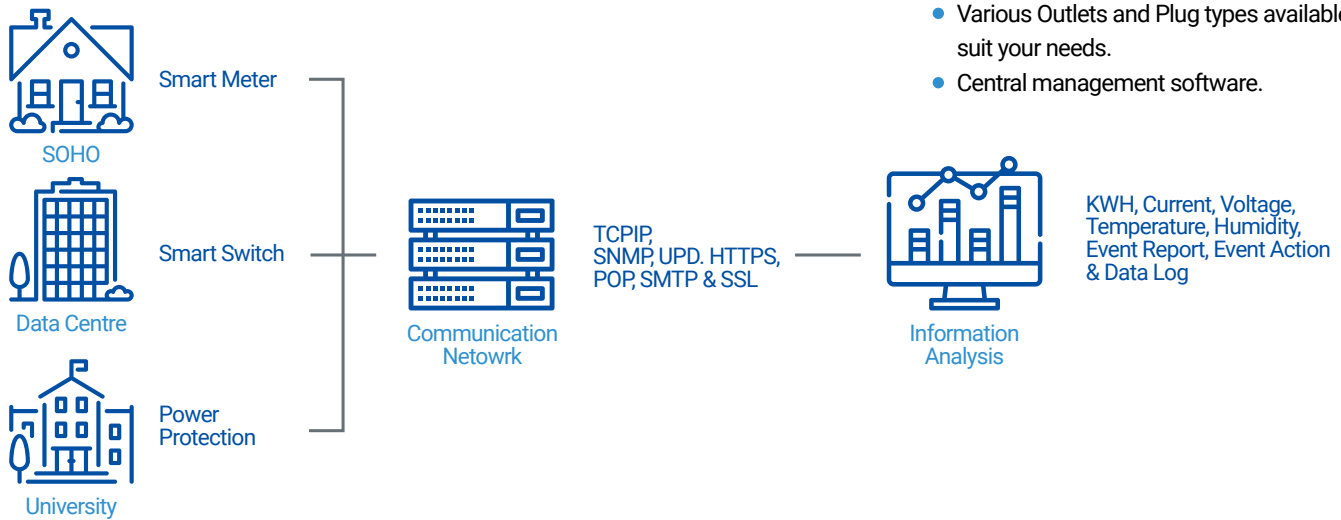
Socket	Plug	18xC13 & 2xC19
C13x18	15A	9019-RB-15A
	15A IEC	9019-RB-C20
C19x2	15A Captive	9019-RB-CAP15F
	20A Captive	9019-RB-CAP20F
	20A Captive	9019-RB-CAP20R

POWER RAILS

INTELLIGENT POWER RAILS

The industry push for efficiency has certain end users and industry professionals now seeking accurate and effective means to manage their critical power resources so that they can remotely monitor their energy efficiency and reduce their overall PUE.

Ease of use, accuracy, reliability and functionality whilst still returning a low level of TCO is what Rack Technologies can offer with their wide selection of intelligent power rails. By combining optional temperature and humidity sensors users can effectively manage, from any location, both their power and server room environment using only one "User Friendly" software program.

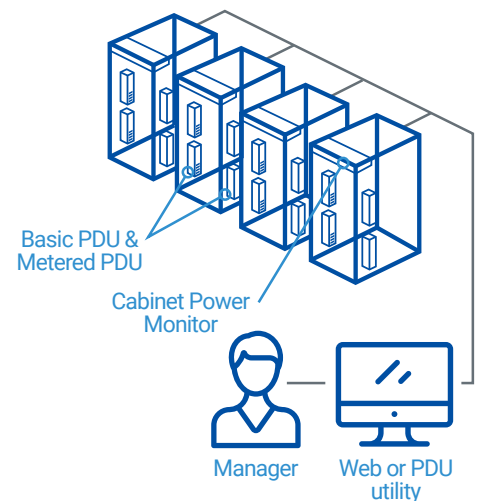


OPTIONS

- Total PDU power metering or per outlet metering/monitoring
- Individual or group power outlet control.
- Scheduled power outlet control.
- Temperature and Humidity detection.
- Set alarm thresholds with alarm notifications.
- Single phase or 3 phase PDU.
- 10Amp to 125Amp.
- 240V and 400V.
- Various Outlets and Plug types available to suit your needs.
- Central management software.

CABINET POWER MONITOR (CPM)

A fine and reliable power distribution unit, it can upgrade Basic and Metered PDU to remote power monitoring. Metered PDU provides PDU power consumption through PDU panel directly. It also can co-operate with Cabinet Monitor to remote monitor its power consumption.



Part Number	Description
CPM-ENV-2	Temperature/Humidity Probe
M1H-1623K-08N1	Metred PDU (8)C13 Outlet (1)RJ45, 1U 16A 230V IEC320 C20 Plug

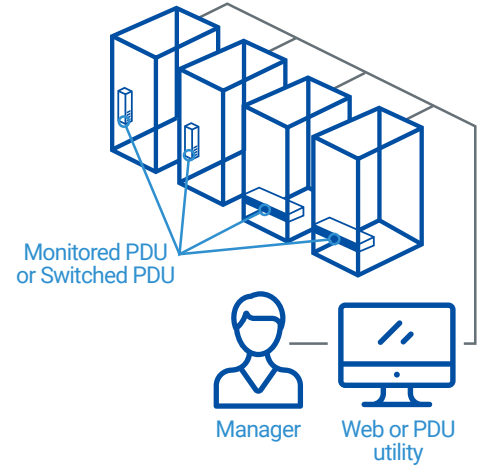
MONITORED PDU

The entry level intelligent PDU with network interface that enables an IT Manager to monitor total PDU load from a remote interface. A monitored PDU provides accurate real time current draw readings enabling users to determine exactly how much room is available before a PDU's capacity is exceeded.



FEATURES

- Meter: True RMS Current Meter.
- Power Monitor: Total Power Monitoring by Meter, Web, SNMP, Remote Software.
- Protocols: Http, Https, SNMP, DHCP, UDP.
- Alarm Thresholds: User-Defined Alarm
- Thresholds for Warning and Overload.
- Event Alert: Email, Trap, Audible Alarm.
- Temperature/Humidity: Option Accessory



Part Number	Description
MTH-1023J-08N1	Monitored PDU (8)C13 Outlet (1)RJ45, 1U 10A 230V IEC320 C14 Plug
MTH-1623K-08N1	Monitored PDU (8)C13 Outlet (1)RJ45, 1U 16A 230V IEC320 C20 Plug
MTV-1623K-16N1	Monitored PDU (14)C13 (2)C19 Outlet (1)RJ45, 0U 16A 230V IEC320 C20 Plug
MTV-3223C-16N2	Monitored PDU (14)C13 (2)C19 Outlet (1)RJ45 (1)RJ11, 0U 32A 230V IEC309 Plug
MTV-3223C-24N3	Monitored PDU (21)C13 (3)C19 Outlet (1)RJ45 (1)RJ11, 0U 32A 230V IEC309 Plug

SWITCHED PDU

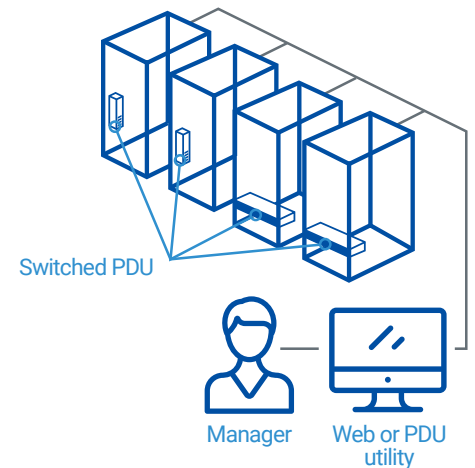
A switched PDU with network interface gives IT administrators the ability to remotely turn on and off each individual power outlet on a PDU, empowering authorised users with the ability to remotely control the supply of power to their connected devices. Makes it possible for IT administrators to remotely power cycle servers, thus reducing downtime.

Supporting sequential outlet control permits equipment to be powered up/down correctly to ensure proper synchronisation of dependent services. Other uses include disabling unused outlets and restricting unauthorised use of power.



FEATURES

- Meter: True RMS Current Meter.
- Power Monitor: Total Power Monitoring by Meter, Web, SNMP, Remote Software.
- Protocols: Http, Https, SNMP, DHCP, UDP.
- Outlet Control : Individual.
- Power Delay: Power On/Off Sequence can be defined.
- Alarm Thresholds: User-Defined Alarm
- Thresholds for Warning and Overload.
- Event Alert: Email, Trap, Audible Alarm.
- Temperature/Humidity: Option Accessory



Part Number	Description
SWH-1023J-08N1	Switched PDU (8)C13 Outlet (1)RJ45, 1U 10A 230V IEC320 C14 Plug
SWH-1623K-08N1	Switched PDU (8)C13 Outlet (1)RJ45, 1U 16A 230V IEC320 C20 Plug
SWV-1623K-16N1	Switched PDU (14)C13 (2)C19 Outlet (1)RJ45, 0U 16A 230V IEC320 C20 Plug
SWV-1623K-24N1	Switched PDU (21)C13 (3)C19 Outlet (1)RJ45, 0U 16A 230V IEC320 C20 Plug
SWV-3223C-16N2	Switched PDU (14)C13 (2)C19 Outlet (1)RJ45 (1)RJ11, 0U 32A 230V IEC309 Plug
SWV-3223C-24N3	Switched PDU (21)C13 (3)C19 Outlet (1)RJ45 (1)RJ11, 0U 32A 230V IEC309 Plug

POWER RAILS

POM PDU

POM is short for "Per Outlet Monitoring". Using the network interface authorised users can remotely drill-down to individual outlets and obtain a quick accurate measurement of the true power being consumed by any specific device.

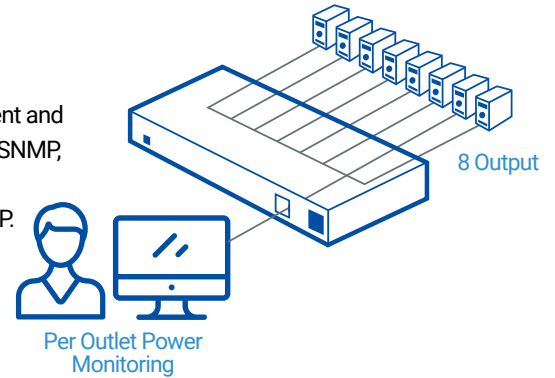
Knowing a device's true power consumption enables IT loads to be more efficiently balanced between Server cabinets. Servers with static power consumption become quickly identified and considered for consolidation, virtualisation or retirement.

Scheduled outlet control enables devices to be turned on & off automatically to meet dedicated hours of operation or maintenance procedures set for a particular day, week day, or every day. Power cycling can be automated for locked devices by monitoring their IP address. Outlets can also be assigned into group access for colocation requirements, limiting access to the entire PDU by unauthorised personnel.



FEATURES

- Meter: True RMS Current Meter.
- Power Monitor: Per Outlet Output, Current and Total Power Monitoring by Meter, Web, SNMP, Remote Software.
- Protocols: Http, Https, SNMP, DHCP, UDP.
- Outlet Control: Individual, Group, Schedule, Auto Ping.
- Power Delay: Power On/Off Sequence can be defined.
- Alarm Thresholds: User-Defined Alarm Thresholds for Warning and Overload.
- Event Alert: Email, Trap, Audible Alarm.
- Temperature/Humidity: Option Accessory.



Part Number	Description
MSH-1023J-08N8	POM PDU (8)C13 Outlet (1)RJ45 (1)RJ11, 1U 10A 230V IEC320 C14 Plug
MSH-1623K-08N8	POM PDU (8)C13 Outlet (1)RJ45 (1)RJ11, 1U 16A 230V IEC320 C20 Plug
MSH-3223C-08N8	POM PDU (8)C13 Outlet (1)RJ45 (1)RJ11, 1U 32A 230V IEC309 Plug



High temperatures are any data installations greatest enemy as sensitive equipment performance deteriorates and equipment life reduces proportionally with excessive heat build up.

Rack Technologies can provide a wide range of equipment to eliminate heat concerns, from simple fan units through to airconditioning, hot and cold aisle containment systems and accessories designed to expel heat or increase chilled air entering the cabinet.

Select from fan units listed here or contact our sales team for advice on how to best manage your cooling requirements.

FEATURES

- Improves air flow
- Safety protected finger guards fully installed, top and bottom
- Totally flush on top panel or frame
- Low noise level fans
- Supplied as complete with 2.5m lead and 3 pin plug
- Whisper quiet fans available on request for sensitive office environments
- Thermostat controlled fans available on request

AIRFLOW AND NOISE LEVEL RATING

Fan Type (single unit)	Air flow (CFM)	Noise Level (dBA)
Standard Fan	87 / 100	45/50
Whisper Fan	60	26

NOTE: Above details based on single fan



FAN KITS (1-FAN UNIT)

- Suits RT Series II and 450 depth WR Series



Part Number	Description
9181	1 fan unit
9181-W	1 fan unit - Whisper
9181-TH	1 fan unit - Thermostatic
9181-W-TH	1 fan unit - Whisper / Thermostatic



FAN KITS (2-FAN UNIT)

- Suits RT Series II and 600 depth WR Series



Part Number	Description
RT9182	2 fan unit
RT9182-W	2 fan unit - Whisper
RT9182-TH	2 fan unit - Thermostat
RT9182-W-TH	2 fan unit - Whisper / Thermostatic

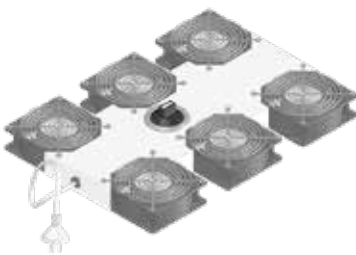


FAN KITS (4-FAN UNIT)

- Suits RT Series II of any depth



Part Number	Description
RT9183	4 fan unit
RT9183-TH	4 fan unit - Thermostat
RT9183-W	4 fan unit - Whisper
RT9183-W-TH	4 fan unit - Whisper / Thermostatic



FAN KITS (6-FAN UNIT)

- Suits RT Series II 1000mm and 1200mm depth cabinet only



Part Number	Description
RT9186	6 fan unit
RT9186-TH	6 fan unit - Thermostat
RT9186-W	6 fan unit - Whisper
RT9186-W-TH	6 fan unit - Whisper / Thermostatic



FILTER KIT FOR SIDE PANELS

- A full range of filters are available to suit your needs
- Filters can be added during either production or can be retrofitted
- Prevent dust ingress into cabinet by filtering and blocking micro particles
- Filter kit consists of - filter guide, double-sided tape and dust filter

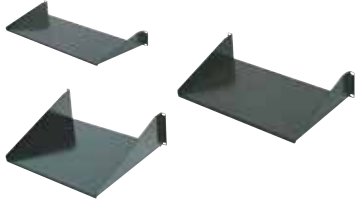
Part Number	Depth (mm)
9006	600
9007	800
9103	900
9105	1000



FAN FILTER

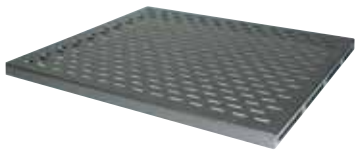
- Not suitable for 2-fan cantilever shelves
- Prevent dust ingress into cabinet by filtering and blocking micro particles

Part Number	Description
9076	2 fan unit
9077	4 fan unit



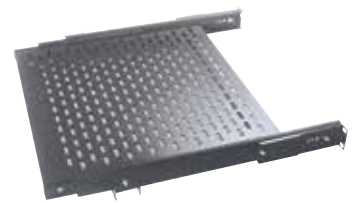
CANTILEVER SHELVES

- Easily installed
- All fasteners included
- Suitable for all 19" cabinets
- Suitable for 19" wall mount cabinets
- Suitable for all 19" open frames
- Vented for better cooling



FIXED SHELVES

- Heavy duty load bearing capacity of 100kg
- Fully vented
- Fixing screws concealed from view
- Easily installed
- Fixed shelves are supplied with mounting brackets



SLIDING SHELVES

- Slide to full length
- Load capacity of 50kg
- Ball bearing slide for greater control of heavy loads
- Fasteners included
- Fully vented
- Easily installed



PIVOTING KEYBOARD SHELF

- Allows for a standard width keyboard to be used in a 19" cabinet
- Shelf must be withdrawn before keyboard tray can be pivoted for use

RU	Part Number	Width	Depth	Load Capacity
1RU	9021	483	170	20kg
2RU	9022		275	25kg
3RU	9023		390	30kg

Part Number	Width	Depth	Description
9024	449	400	For use in cabinets 19" x min. 600mm deep
9025		450	For use in cabinets 19" x min. 600mm deep
9026		600	For use in cabinets 19" x min. 800mm deep
9080		700	For use in cabinets 19" x min. 900mm deep
9086		800	For use in cabinets 19" x min. 1000mm deep
9088		900	For use in cabinets 19" x min. 1000mm deep

Part Number	Description
9028	400mm runner (suits min. 600 deep cabinet)
9029	600mm runner (suits min. 800 deep cabinet)
9082	700mm runner (suits min. 900 deep cabinet)
9087	800mm runner (suits min. 1000 deep cabinet)

Part Number	Suitable for cabinets
9161-400	600mm deep cabinet
9161	800mm deep cabinet
9161-700	900mm deep cabinet

Keyboard and mouse not included.

ACCESSORIES



DOCUMENT HOLDER

- Usually installed on the rear steel doors
- Clear or metal document holder
- Affixed with industrial strength adhesives

Part Number	Description	Dimension
9095-BL	A4 metal document holder	250 x 250 x 32



ADJUSTABLE SHELF RAILS

- This product is user-friendly, easy to install, strong, lightweight and adjustable from 500mm to 880mm. Unlike shelves, these rails take up no RU space nor do they affect air flow
- The equipment support brackets mount easily to rails, providing a strong base for all types of 19", 21" and 26" equipment
- Fits up to 1000mm deep cabinets
- Supplied in pairs

Part Number	Suitable for cabinets
S-KIT-SRL-01-500925	500 to 880



RECESSING BRACKET

- Allows the recessing of equipment deeper into the cabinet
- A pair of recessing brackets are supplied with fasteners

Part Number	Description
9237	1RU 50mm recessing brackets (pair)
9237-100	1RU 100mm recessing brackets (pair)
9228	2RU 50mm recessing brackets (pair)



T-FINGER CABLE MANAGEMENT

- Suitable for 600mm and 800mm wide cabinets only
- Fits neatly alongside vertical rails within 600mm wide cabinets

Part Number	Usable Depth
iQCM08100	93mm T-finger 8RU single module
iQCM08100-150	146mm T-finger 8RU single module

SINGLE MODULAR



93MM

146MM

Part Number	Usable Depth
iQCM42100	93mm T Finger 42RU
iQCM45100	93mm T Finger 45RU
iQCM42100-150	146mm T Finger 42RU
iQCM45100-150	146mm T Finger 45RU

NOTE: Accessories only suitable for 19" racks and cabinets unless otherwise stated.



VERTICAL CABLE MANAGEMENT

- Designed to handle high density cabling, for termination or patching applications
- All fasteners provided
- **Only suitable for RT Series II**

RU	Part Number	Width	Depth
18RU	iQCM1860	80	155
27RU	iQCM2760		
38RU	iQCM3860		
42RU	iQCM4260		
45RU	iQCM4560		

RU	Part Number	Width	Depth
18RU	iQCM1860-150	80	205
27RU	iQCM2760-150		
38RU	iQCM3860-150		
42RU	iQCM4260-150		
45RU	iQCM4560-150		



HORIZONTAL CABLE MANAGEMENT

- Supports and ensures bending radii are met
- Routing of cable to maximise capacity

93MM T-FINGERS

RU	Part Number
1RU	iQOF9509
2RU	iQOF9502
4RU	iQOF9512

146MM T-FINGERS

RU	Part Number
1RU	iQOF9509-150
2RU	iQOF9502-150
4RU	iQOF9512-150



1RU CABLE RING

- Cable rings are sold separately and snap into all standard cagenut holes

RU	Part Number
1RU	9046



1RU CABLE RING WITH BRACKET

- Mount to side of 'L' rail
- Finger can be rotated 90°

Part Number
9046-VWC



1RU CABLE RING PANEL

- 5 horizontal cable rings
- Can be used with all 19" cabinets and wall mounted frames

Part Number
9045

NOTE: Accessories only suitable for 19" racks and cabinets unless otherwise stated.

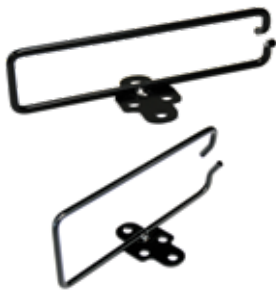
ACCESSORIES



LACING BAR

- 19" racks mountable
- Used for cable management in the rear of a patch panel
- All fasteners provided

Part Number	Dimension
9091	1RU x 483mm



CABLE MANAGEMENT RING 19" & 26"

- Retains cable in an orderly manner
- Designed to maximise area for vertical cable management, between shelf rails and side panels
- All fasteners provided
- Zinc annealed steel

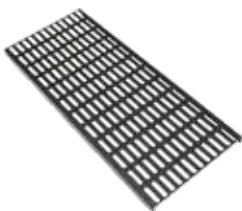
Part Number	Width	Depth	Description
9403-VL	30	150 Internal	19" (600mm wide) vertical
9046-VL	55		26" (800mm wide) vertical



1RU & 2RU HORIZONTAL CABLE MANAGER

- All metal construction is superior to plastic counterparts
- Easy snap fit

RU	Part Number
1RU	9218
2RU	9198



CABLE TRAYS

- Easily installed
- All fasteners included
- Available in 12RU, 18RU, 27RU, 38RU, 42RU and 45RU
- Not suitable for iQ Series

Part Number	Width
RT**51	150
RT**52	225
RT**53	300
RT**54	400
RT**55	450

NOTE: ** = height of cabinet in RU



ROOF BRUSHED CABLE ENTRY

- Protects cable bundles on cabinet entry
- Reduces dust infiltration into the cabinet
- Easy to mount
- Nylon brush
- **Only suitable for RT Series II and RTx Series**

Part Number	Slot Dimensions	
	Width	Depth
9286	219	78

NOTE: Accessories only suitable for 19" racks and cabinets unless otherwise stated.



HORIZONTAL BRUSH CABLE ENTRY

- Can be used with all 19" shape equipment rails
- Allows cable to penetrate the cabinet while preventing dust ingress
- Helps prevent recirculation of hot air in cabinet
- Enables better management of cold air circulation in cabinet
- Aids front to rear cable entry
- All fasteners provided



BLANK PANELS

- Used for aesthetics or to create an air dam
- Complete with fixing hardware



EZIBLANK® BLANK PANELS

- Easy to use
- Fits any rack size
- Saves money
- Enhance efficiency
- Simple to install
- Environmentally friendly



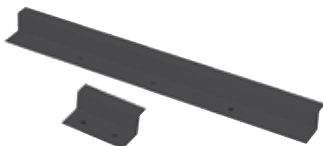
TELESCOPIC CHIMNEY

- Adjustable height; up to 1270mm
- Easily suits cable entry on top panel
- Can be retrofitted around an existing cable installation
- Standard top panel
- Large cable access area: 28,125 sq. mm
- **Only suitable for RT Series II and RTx Series**



FIXED CABINET CHIMNEY

- To facilitate and enclose cable entry, from ceiling to cabinet
- Custom sizes upon request
- Applies only to the free-standing cabinet range
- Easily suits cable entry on top panel
- All fasteners provided
- Standard top panel
- **Only suitable for RT Series II and RTx Series**



REAR WALL/FLOOR MOUNT KIT

- One size suits all
- Easily installed
- Top and bottom supplied as one unit
- Rear wall/floor mount kit is supplied with fasteners, **EXCLUDES** wall/floor bolts
- Maximum weight is determined by wall strength and fasteners
- **Only suitable for RT Series II**

Part Number
9073-BL

RU	Part Number	Slot Dimensions	
		Width	Depth
1RU	9284	390	25
2RU	9285		60

RU	Part Number
1RU	9041
2RU	9042
3RU	9043
4RU	9044
6RU	9202

Part Number	Description
RTDC-BKPNL01	Per box of 10 (10x 6RU blanking panels - Black)

Part Number	Height	Width	Depth
9230-RB	750	375	75

NOTE: Chimney height adjustable from 750mm (h) to 1270mm (h)

Part Number	Width
9078-RB	900h x 225w x 75d
9079-RB	1200h x 225w x 75d

NOTE: Accessories only suitable for 19" racks and cabinets unless otherwise stated.

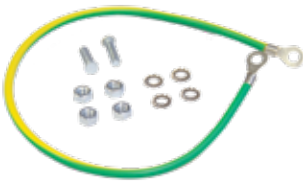
ACCESSORIES



ANTI-TILT BRACKET

- To be used with levelling feet
- Anti-tilt brackets are supplied with fasteners, **EXCLUDES** floor bolts

Part Number	Description
9038	Levelling foot anti-tilt clamp (set)



EARTHING KIT

- 400mm long earthing cable
- Earthing kit consists of: M6 rings at each end, 2x M6 studs, 4x M6 star washers

Part Number
9402



EARTHING BAR

- Copper earth bar is 3mm thick with, slotted and threaded holes

Part Number
C**55

NOTE: ** = height of cabinet in RU.



CAGE NUTS

- Set of cage nuts consist of: # x M6 cage nuts, # x M6 screws and # x M6 flat washers

indicates 4 or 100

Part Number	Description
9074	Fastener kit (set of 4)
9075	Fastener kit (set of 100)



CABINET PLINTH

- Raises cabinet 50mm off floor
- Provides cable entry at rear of cabinet
- Load capacity of 250kg max (UDL)
- **Only suitable for RT Series II**

Note: Not suitable for use with bottom panel.

Description	Depth				
	600mm	800mm	900mm	1000mm	1200mm
600 wide part number	RT9051	RT9052	RT9151	RT9153	RT9174
800 wide part number	RT9150	RT9069	RT9152	RT9156	RT9175



CABINET PLINTH GLAND

- Provided to cover cable entry holes on plinth
- **Only suitable for RT Series II**

Part Number
9232

NOTE: Accessories only suitable for 19" racks and cabinets unless otherwise stated.



BAYING KIT

- Cabinets can be bayed externally
- Easily installed
- Baying kit consist of baying bracket and fasteners
- **Only suitable for RT Series II**

Part Number	Description
9400	RT2 cabinet corners baying bracket kit (pair)



LEVELLING FEET (SET OF 4)

- Maximum load capacity of 500kg
- Feet attach directly to frame for extra stability and support
- Levelling feet are fully adjustable
- Feet can raise cabinet enclosure 60mm off th ground
- Optional bottom panel with cable entry cut-out available upon request
- Solves uneven floor issues
- **Only suitable for RT Series II**

Part Number	Description
9039-M	RT2 cabinet levelling feet set of 4 (M10 plastic)



CABINET CASTORS (SET OF 4)

- Castors attach directly to cabinet frame for extra stability and support
- Front castors have brakes
- Castors can raise the cabinet enclosure 100mm off the ground
- Maximum load capacity of 250kg (UDL)
- Bottom plate with cable entry cut-out available upon request
- **Only suitable for RT Series II**

Part Number	Description
9040-M	RT2 cabinet castos wheels set of 4



FIXED FIBRE ENCLOSURE

- Suitable for all 19" wide cabinets
- Internal cable management
- Able to accommodate splice cas-ettes
- Four entry points

RU	Part Number	Width	Depth	Description
1RU	9065	600	220	24-way ST fixed fibre tray with lid. Accepts 24x ST couplers
	9066		200	24-way SC fixed fibre tray. Holds 12x duplex couplers
	9067			12-way ST fixed fibre tray with lid. Accepts 16x ST couplers
	9060			12-way SC fixed fibre tray with lid. Holds 6x duplex couplers
	9263			24-way LC duplex fixed fibre tray. Holds 24x LC duplex couplers. Can also hold 24x SC simplex couplers

NOTE: Accessories only suitable for 19" racks and cabinets unless otherwise stated.



UPS SYSTEMS

CABINETS & ACCESSORIES

- UPS Systems
- Professional Rackmount
- Online S
- External Battery Module
- Sensor
- Data Centre UPS

Smart app UPS Systems provide an advanced level of protection with monitoring and management capabilities that support mission-critical servers, telecom equipment, VoIP, networking hardware and more.



PROFESSIONAL RACKMOUNT

Professional Rackmount series features critical and noncritical load outlets. During power failures, the noncritical load outlet will be shutdown first to spare runtime for critical load outlet.

KEY BENEFITS






- Reliable Power Quality
- Electricity Cost Savings
- Device Protection Design
- Automatic Voltage Regulation (AVR)
- Real-time LCD Readout

FEATURES

- Line-interactive UPS Topology
- Energy Saving Technology
- Active PFC Compatible
- Pure Sine Wave Output
- Automatic Voltage Regulation (AVR)
- Overload Protection
- Critical/ Non-critical Load Outlets
- Hot-swappable Batteries
- Surge and Spike Protection
- EMI and RFI Filtration
- LCD Status Display
- USB Connectivity Port
- Serial Connectivity Port
- Emergency Power Off (EPO) Port
- PowerPanel® Management Software
- SNMP/ HTTP Remote Management Capability
- Rack/ Tower Convertible Configurations

TYPICAL APPLICATIONS

- PCs & Workstations
- Computers & Laptops
- Printers & Office Devices
- SOHO Networking Devices
- Telecom & Network Equipment
- Video/Audio Equipment
- Industrial Equipment
- Mission-Critical Equipment
- Generator/Motor/Pump
- Back Office
- Server Room
- Data Center

Part Number	VA	Watts	Output Voltage (Vac)	Half Load Runtime (min)	Outlets
 RTUPS-PR1000ELCDRT1U	750	500	220 ± 5% 230 ± 5% 240 ± 5%	18	IEC C13 x 6
 RTUPS-PR1000ELCDRT2U	1000	900	220 ± 5% 230 ± 5% 240 ± 5%	22	IEC C13 x 8
 RTUPS-PR1500ELCDRT2U	1500	1350	220 ± 5% 230 ± 5% 240 ± 5%	11	IEC C13 x 8
 RTUPS-PR2000ELCDRTL2U	2000	1650	220 ± 5% 230 ± 5% 240 ± 5%	14	IEC C13 x 10
 RTUPS-PR3000ELCDRT2U	3000	2250	220 ± 5% 230 ± 5% 240 ± 5%	10.5	IEC C19 x 1 IEC C13 x 9

UPS SYSTEMS

ONLINE S

The Online S series features online double-conversion topology, guaranteeing the best power quality. When server power issues occur, this series can maintain continuous operation with zero transfer time to Battery Mode.

KEY BENEFITS

- For Enterprise Application
- Electricity Cost Savings
- Extended Battery Lifespan
- Scalable Runtime via EBM
- Compatible with Generator

FEATURES

- Online (Double Conversion) UPS Topology
- Energy Saving Technology
- Generator Compatible
- Overload Protection
- Maintenance Bypass Switch
- Zero Transfer Time
- Smart Battery Management (SBM)
- Extended Battery Module (EBM)
- Surge and Spike Protection
- EMI and RFI Filtration
- LCD Status Display
- Emergency Power Off (EPO) Port
- PowerPanel® Management Software
- SNMP/ HTTP Remote Management Capability
- Rack/ Tower Convertible Configurations

TYPICAL APPLICATIONS

- Data Closets
- NAS & Servers
- Home Theater Systems
- DVRs/Surveillance Systems
- POS Systems
- Transportation & Infrastructure
- Vehicle/Yacht
- Emergency Systems
- Electric Lighting
- Back Office
- Server Room
- Data Center

Part Number	VA	Watts	Output Voltage (Vac)	Half Load Runtime (min)	Outlets
 RTUPS-OLS1000ERT2U	1000	900	208 ± 1% 220 ± 1% 230 ± 1% 240 ± 1%	15	IEC C13 x 6
 RTUPS-OLS1500ERT2U	1500	1350	208 ± 1% 220 ± 1% 230 ± 1% 240 ± 1%	14	IEC C13 x 6
 RTUPS-OLS2000ERT2U	2000	1800	208 ± 1% 220 ± 1% 230 ± 1% 240 ± 1%	15	IEC C13 x 8
 RTUPS-OLS3000ERT2U	3000	2700	208 ± 1% 220 ± 1% 230 ± 1% 240 ± 1%	14	IEC C19 x 1 IEC C13 x 8
 RTUPS-OLS6000ERT6UM	6000	5400	208 ± 1% 220 ± 1% 230 ± 1% 240 ± 1%	16.4	Hardwire Terminal Block x 1
 RTUPS-OLS10000ERT6UM	10000	9000	208 ± 1% 220 ± 1% 230 ± 1% 240 ± 1%	11	Hardwire Terminal Block x 1

EXTERNAL BATTERY MODULE

External Battery Module offers extended runtime when used with compatible UPS. It allows hot-swap, which enables users to perform normal battery maintenance without significant interruption.

KEY BENEFITS





- Flexible Installation
- Sealed Lead-acid Batteries
- Robust Enclosure
- Fast Battery Charging Design

FEATURES

- Rack/ Tower Convertible Configurations
- Sealed Lead-acid Batteries
- Built-in charger for External Battery Module (EBM)
- Metal Housing

TYPICAL APPLICATIONS

- Back Office
- Server Room
- Data Center

Part Number	Output Voltage	Rated Current	Battery Quantity	Battery Voltage	Battery Capacity	Compatible Model
 RTUPS-BPE48V75ART2U	48	60	8	12	9	
 RTUPS-BPSE36V45ART2U	36	45	6	12	7	RTUPS-OLS1000ERT2U RTUPS- OLS1500ERT2U
 RTUPS-BPSE72V45ART2U	72	45	12	12	7	RTUPS-OLS2000ERT2U RTUPS-OLS3000ERT2U
 RTUPS-BPSE240V75ART3U	240	75	20	12	7	RTUPS-OLS6000ERT6UM



ENERGY STAR®

A ENERGY STAR certified UPS can cut energy losses by 30-55%. Reduce energy usage, save money and protect the environment with ENERGY STAR products from CyberPower.



CISCO COMPATIBLE™

This product has demonstrated the interoperability with Cisco technologies so that be recognized "Cisco Compatible".



GREENPOWER UPS™

GreenPower UPS™ Technology improves operating efficiency and minimizes energy consumption, so that users can enjoy significant energy cost savings over conventional UPS systems.

REMOTE MANAGEMENT CARD

The remote management card allows administrator to remotely monitor and control Smart App UPS, Emergency Power Systems, and Automatic Switches via standard web browsers or the network management system (NMS) on their network. When a power issue occurs, administrator will be notified immediately via email, SNMP traps and SMS.

KEY BENEFITS


- Plug-n-play Installation
- User Friendly Web Interface
- Easy Power Management
- Support Secured Communication
- Compatible With ENVIROSENSOR

FEATURES

- Plug-n-play Installation
- User Friendly Web Interface
- Remotely Schedule Shutdown/ Start-up/ Reboot of the UPS
- Secure Authentication
- Compatible with ENVIROSENSOR

TYPICAL APPLICATIONS

- Back Office
- Server Room
- Data Center
- Industrial Factory
- Power Generation

Part Number	Connectivity Port	Software	Protocols	Authentication	Support EnviroSensor
 RTUPS-RMCARD205	RJ45, RJ45 (for Environmental Sensor)	PowerPanel® Business Edition	IPv4/v6, SNMPv1/v3, HTTP/HTTPS, TCP/IP, UDP, DHCP, NTP, DNS, SMTP, SSH, SSL, TLS, Telnet, FTP, and Syslog	RADIUS, LDAP, LDAPS, Windows AD	Yes

TEMPERATURE & HUMIDITY SENSOR

Provides real-time temperature and humidity readings when connected to select RMCARD. It is used by administrators to monitor connected devices to ensure they are operated in a suitable environment.

KEY BENEFITS


- Compulsory with RMCARD (203/ 205/ 303/ 305)
- Real-time Temperature and Humidity Readings
- Real-time Event Notification
- Easy Access By Web Browser
- Sensor Location Display

FEATURES

- Compulsory with RMCARD (203/ 205/ 303/ 305)
- Environmental Sensor
- Automatic Event Notifications
- Web Management Interface
- Sensor Location Display
- RoHS Compliant

TYPICAL APPLICATIONS

- Back Office
- Server Room
- Data Center
- Industrial Factory
- Power Generation

Part Number	Connector Type	Temp. Range (°F)	Temp. Range (°C)	Humidity Range (%)	Dimensions
 RTUPS-RJ45	RJ45	32 ~ 158	0 ~ 70	10 ~ 90	168 x 58 x 164

DATA CENTRE UPS

The HSTP33 Series UPS includes the advantage of scalability, allowing a capacity increase of up to 400Kva of the total load to the existing backup power system. With its advanced parallel architecture. It allows each UPS to evenly share the power consumed by rear end loads, thus achieving N+X power redundancy.

FEATURES

- Three Phase Tower UPS
- Online (Double Conversion) UPS Topology
- Energy Saving Technology
- Dual Inputs
- Generator Compatible
- Pure Sine Wave Output
- Overload Protection
- Maintenance Bypass Switch
- LCD Status Display
- Emergency Power Off (EPO) Port
- PowerPanel® Management Software

KEY BENEFITS

- For Enterprise Application
- Input Redundancy Design
- Compatible with Generator
- Easy Maintenance
- Real-time LCD Readout

TYPICAL APPLICATIONS

- Data Closets
- Transportation & Infrastructure
- Emergency Systems
- Server Room
- Data Center
- Industrial Factory
- Power Generation

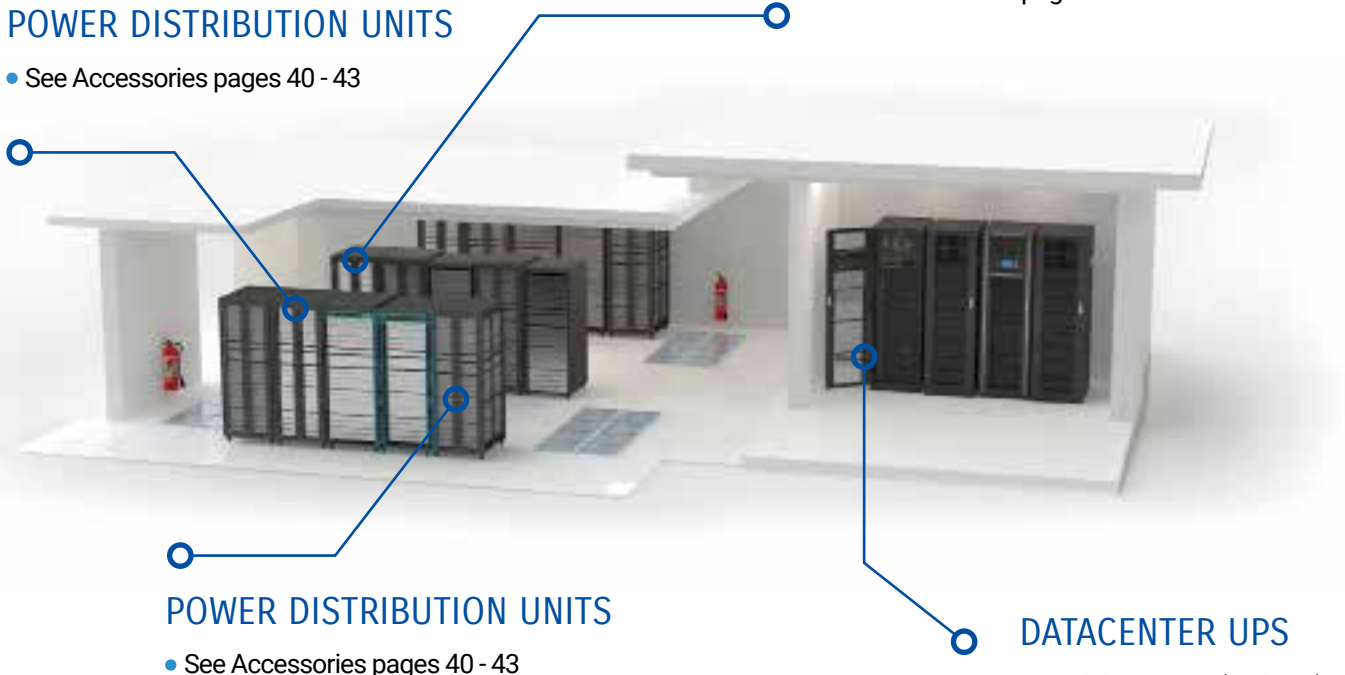
SOLUTION SCENARIO

POWER DISTRIBUTION UNITS

- See Accessories pages 40 - 43

POWER DISTRIBUTION UNITS

- See Accessories pages 40 - 43



POWER DISTRIBUTION UNITS

- See Accessories pages 40 - 43

DATA CENTER UPS

- Modular RTUPS (3-Phase)
- Online S (3-Phase)
- STP33 (3-Phase)
- HSTP33 (3-Phase)

UPS SYSTEMS



RTUPS-HSTP3T10KE



RTUPS-HSTP3T15KE



RTUPS-HSTP3T20KE



RTUPS-HSTP3T40KE



RTUPS-HSTP3T40KEBC



RTUPS-HSTP3T90KE



RTUPS-HSTP3T60KE

Part Number	VA	Watts	Rated Current (A)	Outlets
RTUPS-HSTP3T10KE	10000	9000	14	Hardwire Terminal Block x 1
RTUPS-HSTP3T10KEBC	10000	9000	14	Hardwire Terminal Block x 1
RTUPS-HSTP3T10KEBCWOB	10000	9000	14	Hardwire Terminal Block x 1
RTUPS-HSTP3T15KE	15000	13500	21	Hardwire Terminal Block x 1
RTUPS-HSTP3T15KEBC	15000	13500	21	Hardwire Terminal Block x 1
RTUPS-HSTP3T15KEBCWOB	15000	13500	21	Hardwire Terminal Block x 1
RTUPS-HSTP3T20KE	20000	18000	28	Hardwire Terminal Block x 1
RTUPS-HSTP3T20KEBC	20000	18000	28	Hardwire Terminal Block x 1
RTUPS-HSTP3T20KEBCWOB	20000	18000	28	Hardwire Terminal Block x 1
RTUPS-HSTP3T30KE	30000	27000	42	Hardwire Terminal Block x 1
RTUPS-HSTP3T30KEBC	30000	27000	42	Hardwire Terminal Block x 1
RTUPS-HSTP3T30KEBCWOB	30000	27000	42	Hardwire Terminal Block x 1
RTUPS-HSTP3T40KE	40000	36000	55	Hardwire Terminal Block x 1
RTUPS-HSTP3T40KEBC	40000	36000	55	Hardwire Terminal Block x 1
RTUPS-HSTP3T40KEBCWOB	40000	36000	49	Hardwire Terminal Block x 1
RTUPS-HSTP3T60KE	60000	54000	83	Hardwire Terminal Block x 1
RTUPS-HSTP3T80KE	80000	72000	110	Hardwire Terminal Block x 1
RTUPS-HSTP3T90KE	90000	81000	124	Hardwire Terminal Block x 1
RTUPS-HSTP3T100KE	100000	90000	138	Hardwire Terminal Block x 1
RTUPS-HSTP3T120KE	120000	108000	165	Hardwire Terminal Block x 1



WORLD CLASS AIRFLOW MANAGEMENT MARKET-LEADING HOT AND COLD AISLE CONTAINMENT SOLUTIONS

Rack Technologies is the Australian Distributor of market leading Polargy Hot and Cold Aisle Containment solutions.

Since 2007 Polargy has been the world leading designer and manufacturer of hot and cold aisle containment solutions for new data centre construction and retrofits. Polargy is the provider of choice for many world class – mission critical facilities owners and operators. Polargy containment is deployed by customers including Facebook, Verizon, Pixar Animation, Barclays and Dell.

Rack Technologies will provide a complete solution from consultation and design to installation.

INNOVATIVE SOLUTIONS

Drawing on years of experience serving these top mission critical operators, Polargy, together with Rack Technologies has a deep insight into all aspects of data centre infrastructure and has developed ingenious solutions to common and costly problems.

HOT AISLE CONTAINMENT

Containing the hot aisle is clearly the trend in new data centre construction for the enterprise segment. Hot aisle containment focuses on isolating hot exhaust air on its return to the CRAC units or on its way out of the building. Architects and Engineers prefer this method of air segregation because;

- Airside economisation designs that flood the whole room with cold air are easy to build
- It is much easier to achieve airflow balance with a common cold zone
- A common cool area in the space is more comfortable for users.

For these reasons, containment on the hot side sees wide adoption in new data centre builds.

COLD AISLE CONTAINMENT

Containing the cold aisle has been the most common approach for energy efficiency retrofits and many co-location and wholesale providers. Cold aisle containment confines the cold supply air within the aisle so that it is only available to the equipment and cannot escape out of the aisle ends or over the top of the aisle. The most common approach of this containment approach is aisle end doors and roof panels on a raised frame with perimeter CRACs.

Cold aisle containment is widely used on retrofits of existing site because the roofing approach can avoid the need to modify fire suppression and fits below existing cable trays and other obstructions. Co-location and wholesale providers like this method because it provides flexibility for layout changes. With individual contained cold aisles it is particularly important to monitor and balance the airflow within the aisles.

AISLE CONTAINMENT

PREFABRICATED CONTAINMENT SYSTEMS

Rack Technologies, together with Polargy are changing the way containment is deployed during new construction to bring relief to build schedules and budgets. Polargy's pre fabricated, flat pack system is a smarter way to build because it installs in half the time of traditional stick built systems and costs significantly less. With the notion that containment is in the projects last phase, speeding its installation gives tremendous advantage to meeting schedules.

AISLE END CONTAINMENT DOORS

Great doors make for a great user experience in a contained data centre. Easy opening, smooth sliding, no threshold, auto closing and hold open features are attributes of Polargy Aisle end doors.

A variety of Aisle end containment doors are available including Polargy's unique, adjustable height sliding doors and easy to install swing doors.

AISLE CONTAINMENT ROOF PANELS

The polarplex Drop-away panel for use below sprinkler heads is another industry first from Polargy. These UL listed drop away panels resolve the "sprinkler head obstruction" problem associated with deploying containment. This unique hot and cold aisle containment solution is deployed horizontally across the aisles to create a tight containment barrier.

The panels are made of an aluminium frame with a special translucent insert. The panels are heat sensitive and fall away in high heat, allowing access for suppression systems. They are designed for use underneath lighting and fire suppression systems and are engineered to drop out in the event of a fire.

CONTAINMENT PANELS

Polarplex containment panels are an attractive containment solution for isolating above and around racks. They are typically deployed vertically to create an attractive, modular containment barrier. Made of anodized aluminium framing and fire safe inserts, the Polarplex containment panels are lightweight, cost effective and attractive looking. Systems can be ceiling suspended with an innovate quick connect and quick removal design or alternatively secured to rack tops or the floor.

CURTAIN PANELS AND STRIP CURTAIN DOORS

Polarplex containment curtains are an economical way to eliminate hot spots and overcooled zones. Made of high grade vinyl and installed with Polargy's trouble free mounting system they are easy to install and flexible to re-deploy.



Ceiling Supported Hot Aisle Containment



Cabinet Supported Hot Aisle Containment



Cabinet Supported Cold Aisle Containment



Floor Mounted Hot Aisle Containment



Aisle containment is the new air flow management standard for Data Centres. The ROI's are simply compelling providing significant benefits including:

- Payback in less than a year.
- Turn off CRAC units.
- Reduced hot air recirculation.
- Increased CRAC set points.
- Significantly lower on-going energy costs.
- Increased equipment reliability and fewer hot spots.
- Added server capacity promoting deferred capital expenditure.

At Rack Technologies offers a range of aisle containment options that complement the various site conditions found in different data centres.

FLOOR SUPPORTED OPTION



Containment Only



+ Infrastructure

CARLSON AND POLARGY CASE STUDY – HOT AISLE CONTAINMENT FOR NEW POWER UTILITY DATA CENTER

Project Background

Carlson Design Construct selected Polargy to provide and install the Hot Aisle Containment system for its construction of a new data center in Nevada. Carlson sought a partner that possessed experience in large projects. Polargy created designs for each aisle, prepared detailed shop drawings, and installed the system.

Client:	Confidential
Architect:	PlanNet
Location:	Las Vegas, NV
White Space:	5,000 square feet
Completion Date:	2011

Unique Design Challenges

- Sloping Floor with 4" Drop Across 40'
- Aisle End RPPs
- Free Standing, Rack Independent Wall
- Cable Trays Proximity to Vertical Panels

Hot Aisle Containment Design

- Free Cooling with Air Side Economizer, Slab Floor, and Hot Aisle Containment
- PolarPlex Standard Panels Attached to Racks with Special F-Bracket
- Swing Doors
- Free Standing Wall Supported with Unistrut
- Temporary Curtain Panels for Row with Legacy Equipment
- Panel Cutouts for Cross Aisle Trays



Shop Drawings of Hot Aisles



Free Standing Wall



Panel and F-Bracket

CABINET SUPPORTED OPTION



Horizontal Panels



Vertical Panels



CONTACT US 1300 550 322
OR EMAIL SALES@RACK-TECH.COM

A FULL RANGE OF DATA CENTRE SOLUTIONS PRODUCTS ARE AVAILABLE ON REQUEST

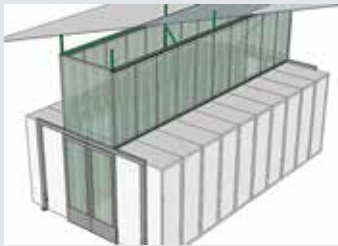
AISLE CONTAINMENT

Aisle containment manages airflow within a data centre by isolating hot aisles and cold aisles from each other, thus preventing the mixing of hot and cold airstreams. This enables hot air to be returned to the CRAC unit at a higher temperature, increasing CRAC efficiency, but most importantly enables chilled air leaving the CRAC to remain unadulterated before it reaches your equipment, providing uniform server inlet temperatures.

CEILING SUPPORTED OPTION



Single Tier



Two Tier

ASHBURN CO-LOCATION CASE STUDY – COLD AISLE CONTAINMENT FOR NEW DATA CENTER

Project Background

Client desired “removable” rigid vertical partitions because of a need for easy and quick removal for access and cleaning. Client also required aesthetically attractive and visually interesting permanent partitions for selected non-tenant areas.

Unique Design Challenges

- Lightweight Removable Rigid Partitions
- Simple Mounting Features
- Cost Goals Per Linear Foot
- Permanent Opaque, Rigid Partitions to Create “Light Box” Effect

Cold Aisle Containment Design

- Open Top Cold Aisle Containment with Overhead Supply and Slab Floor
- PolarPlex Suspended Panel System Attached to Overhead Steel Frame Structure for Above Racks
- PolarPlex SPS for Cage Wall Isolation
- PolarDam Air Dam Foam as needed to seal miscellaneous gaps.
- PolarPlex Standard Panels and Custom F-Brackets for “Light Box”

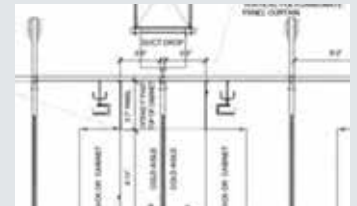
Client:	Confidential
Architect:	Sheehan Partners
Location:	Ashburn, VA
White Space:	222,000 square feet
Completion Date:	2013



Installation of SPS



“Light Box” Containment



SPS Containment Drawing

ENGINEERING AND DESIGN SUPPORT

Rack Technologies engineers offer design support for hot and cold aisle containment projects of any size. Rack technologies can create shop drawings from architectural drawings in CAD. We also offer design support where we assist architects and engineers in the development of a final project design. For retrofits with less specific documentation Rack Technologies prepares basic design documents from layout drawings and field measurements.

With a multitude of options and methods available, Rack Technologies can provide engineering support to ensure the most efficient method is deployed for your particular installation.



Part Number	Page
9006	45
9007	45
9021	46
9022	46
9023	46
9024	46
9025	46
9026	46
9028	46
9029	46
9038	51
9041	50
9041	50
9042	50
9042	50
9043	50
9043	50
9044	50
9044	50
9045	48
9046	48
9060	52
9065	52
9066	52
9067	52
9074	51
9075	51
9076	45
9080	46
9082	46
9086	46
9087	46
9088	46
9091	49
9103	45
9105	45
9161	46
9181	44
9198	49
9202	50
9202	50
9218	49
9228	47
9237	47
9263	52
9284	50
9285	50
9286	49
9400	52
9402	51

Part Number	Page
9001-RB	40
9001-RB-15A	40
9001-RB-C14	40
9001-RB-C20	40
9001-RB-CAP10F	40
9001-RB-CAP15F	40
9001-RB-CAP20R	40
9003-RB	40
9003-RB-15A	40
9003-RB-C14	40
9003-RB-C20	40
9003-RB-CAP10F	40
9003-RB-CAP15F	40
9003-RB-CAP20R	40
9004-RB	40
9004-RB-15A	40
9004-RB-C14	40
9004-RB-C20	40
9004-RB-CAP10F	40
9004-RB-CAP15F	40
9004-RB-CAP20R	40
9005-RB	40
9005-RB-15A	40
9005-RB-C14	40
9005-RB-C20	40
9005-RB-CAP10F	40
9005-RB-CAP15F	40
9005-RB-CAP20R	40
9008-RB	40
9008-RB-15A	40
9008-RB-C14	40
9008-RB-C20	40
9008-RB-CAP10F	40
9008-RB-CAP15F	40
9008-RB-CAP20R	40
9009-RB	40
9009-RB-15A	40
9009-RB-C14	40
9009-RB-C20	40
9009-RB-CAP10F	40
9009-RB-CAP15F	40
9009-RB-CAP20R	40
9012-RB	40
9012-RB-15A	40
9012-RB-C14	40
9012-RB-C20	40
9012-RB-CAP10F	40
9012-RB-CAP15F	40
9012-RB-CAP20R	40
9019-RB-15A	40

Part Number	Page
9019-RB-C20	40
9019-RB-CAP15F	40
9019-RB-CAP20F	40
9019-RB-CAP20R	40
9039-M	52
9040-M	52
9046-VL	49
9046-VWC	48
9073-BL	51
9078-RB	50
9079-RB	50
9080-ST	46
9161-400	46
9161-700	46
9181-TH	44
9181-W	44
9181-W-TH	44
9230-RB	50
9232-RB	20
9237-100	47
9403-VL	49
AVOF5512	11
AVOF5524	11
C**55	
CPM-ENV-2	41
iQCM08100	47
iQCM08100-150	47
iQCM1860	48
iQCM1860-150	48
iQCM2760	48
iQCM3860	48
iQCM3860-150	48
iQCM42100	47
iQCM42100-150	47
iQCM45100	47
iQCM45100-150	47
iQCM4560	48
iQCM4560-150	48
iQCMXX60	31
iQCMXX60-150	31
iQCMXX70	31
iQCMXX70-150	31
iQOF3801	27
iQOF4501	27
iQOF5201	27
iQOF9501	30
iQOF9502	31
iQOF9502-150	31
iQOF9503	29, 30
iQOF9504	29, 30

PART NUMBER INDEX

Part Number	Page
iQOF9505	30
iQOF9506	30
iQOF9507	30
iQOF9508	30
iQOF9509	29, 31, 48
iQOF9509-150	29, 31, 48
iQOF9511	27
iQOF9512	29, 31, 48
iQOF9512-150	29, 31, 48
iQOF9513	30
iQOF9514	27
iQOFXX20	31
iQOFXX20-150	31
iQOFXX40	31
iQOFXX40-150	31
iQOFXX50	31
iQOFXX50-150	31
IQS6042V	26
IQS6045V	26
IQS6047V	26
IQS6242V	26
IQS6245V	26
IQS6247V	26
IQS8042V	26
IQS8045V	26
IQS8047V	26
IQS8242V	26
IQS8245V	26
IQS8247V	26
IQS8845V	26
IQS9501	26
IQS9502	26
IQS9503	26
IQS9504	26
IQS9505	26
IQS9506	26
IQS9507	26
IQS9508	26
IQS9509	26
IQS9510	26
IQS9511	26
IQS9512	26
IQS9513	26
IQS9514	26
IQS9515	26
IQS9516	26
IQS9517	26
IQS9518	26
IQS9519	26
IQS9520	26

Part Number	Page
IQS9521	26
IQS9522	26
IQS9523	26
IQS9525	26
IQS9526	26
IQS9527	26
IQS9528	26
IQS9529	26
IQSOF4520	28
IQSOF4520-150	28
IQSOF4540	28
IQSOF4540-150	28
IQSOF5220	28
IQSOF5220-150	28
IQSOF5240	28
IQSOF5240-150	28
M1H-1623K-08N1	41
MSH-1023J-08N8	43
MSH-1623K-08N8	43
MSH-3223C-08N8	43
MTH-1023J-08N1	42
MTH-1623K-08N1	42
MTV-1623K-16N1	42
MTV-3223C-16N2	42
MTV-3223C-24N3	42
RT**51	49
RT**52	49
RT**53	49
RT**54	49
RT**55	49
RT1200	20
RT1201	20
RT1203	20
RT1204	20
RT1205	20
RT1206	20
RT1207	20
RT1208	20
RT1209	20
RT1210	20
RT1211	20
RT1212	20
RT1214	20
RT1221	20
RT1222	20
RT1223	20
RT1234	20
RT1236	20
RT1238	20
RT1239	20

Part Number	Page
RT12YY-BIFOLD	20
RT1800	20
RT1801	20
RT1803	20
RT1804	20
RT1805	20
RT1806	20
RT1807	20
RT1808	20
RT1809	20
RT1810	20
RT1811	20
RT1812	20
RT1814	20
RT1821	20
RT1822	20
RT1823	20
RT1823BI	20
RT1833	20
RT1834	20
RT1836	20
RT1838	20
RT1839	20
RT18YY-BIFOLD	20
RT2700	20
RT2701	20
RT2703	20
RT2704	20
RT2705	20
RT2706	20
RT2707	20
RT2708	20
RT2709	20
RT2710	20
RT2711	20
RT2712	20
RT2714	20
RT2714BI	20
RT2721	20
RT2722	20
RT2723	20
RT2723BI	20
RT2733	20
RT2734	20
RT2736	20
RT2738	20
RT2739	20
RT27YY-BIFOLD	20
RT3800	20
RT3801	20

Part Number	Page
RT3803	20
RT3804	20
RT3805	20
RT3806	20
RT3807	20
RT3808	20
RT3809	20
RT3810	20
RT3811	20
RT3812	20
RT3814	20
RT3814BI	20
RT3821	20
RT3822	20
RT3823	20
RT3823BI	20
RT3833	20
RT3834	20
RT3836	20
RT3838	20
RT3839	20
RT4200	20
RT4201	20
RT4203	20
RT4204	20
RT4205	20
RT4206	20
RT4207	20
RT4208	20
RT4209	20
RT4210	20
RT4211	20
RT4212	20
RT4214	20
RT4214BI	20
RT4221	20
RT4222	20
RT4223	20
RT4223BI	20
RT4233	20
RT4234	20
RT4236	20
RT4238	20
RT4239	20
RT4511	20
RT4512	20
RT4514	20
RT4514BI	20
RT4521	20
RT4522	20
RT4523	20

Part Number	Page
RT4523BI	20
RT4583	20
RT4584	20
RT4585	20
RT4586	20
RT4589	20
RT4590	20
RT4591	20
RT4592	20
RT4595	20
RT4596	20
RT9051	20
RT9052	20
RT9069	20
RT9150	20
RT9151	20
RT9152	20
RT9153	20
RT9156	20
RT9174	20
RT9175	20
RT9182	44
RT9182-TH	44
RT9182-W	44
RT9182-W-TH	44
RT9183	45
RTC-3FAN	37
RTC-6FAN	37
RTC-BAFFLE-L800W	37
RTC-BAFFLE-M800W	37
RTC-BAFFLE-S800W	37
RTC-BAFFLE-XL800W	37
RTCBF-BAYING-KIT	37
RTC-CM 42RU 600W	37
RTC-CM 42RU 800W	37
RTC-CM 45RU 600W	37
RTC-CM 45RU 800W	37
RTC-MUTO-RD	37
RTC-MUTO-WT	37
RTUPS-BPE48V75ART2U	56
RTUPS-BPSE240V75ART3U	56
RTUPS-BPSE36V45ART2U	56
RTUPS-BPSE72V45ART2U	56
RTUPS-HSTP3T100KE	59
RTUPS-HSTP3T10KE	59
RTUPS-HSTP3T10KEBC	59
RTUPS-HSTP3T10KEBC-WOB	59
RTUPS-HSTP3T120KE	59
RTUPS-HSTP3T15KE	59
RTUPS-HSTP3T15KEBC	59

Part Number	Page
RTUPS-HSTP3T15KEBC-WOB	59
RTUPS-HSTP3T20KE	59
RTUPS-HSTP3T20KEBC	59
RTUPS-HSTP3T20KEBC-WOB	59
RTUPS-HSTP3T30KE	59
RTUPS-HSTP3T30KEBC	59
RTUPS-HSTP3T30KEBC-WOB	59
RTUPS-HSTP3T40KE	59
RTUPS-HSTP3T40KEBC	59
RTUPS-HSTP3T40KEBC-WOB	59
RTUPS-HSTP3T60KE	59
RTUPS-HSTP3T80KE	59
RTUPS-HSTP3T90KE	59
RTUPS-OLS10000ERT6UM	55
RTUPS-OLS1000ERT2U	55
RTUPS-OLS1500ERT2U	55
RTUPS-OLS2000ERT2U	55
RTUPS-OLS3000ERT2U	55
RTUPS-OLS6000ERT6UM	55
RTUPS-PR1000ELCDRT1U	54
RTUPS-PR1000ELCDRT2U	54
RTUPS-PR1500ELCDRT2U	54
RTUPS-PR2000LCDRTLXL2U	54
RTUPS-PR3000ELCDRT2U	54
RTUPS-RJ45	57
RTUPS-RMCARD205	57
SWH-1023J-08N1	42
SWH-1623K-08N1	42
SWV-1623K-16N1	42
SWV-1623K-24N1	42
SWV-3223C-16N2	42
SWV-3223C-24N3	42
WFV-1RU	11
WFV-2RU	11
WFV-3RU	11
WFV-4RU	11

PART NUMBER INDEX



SALES OFFICE

Sydney Head Office

190 Power Street,
Glendenning, NSW 2761 Australia

Postal Address:

PO Box 626, St Marys,
NSW 1790 Australia

Phone: +612 8805 0050

Freecall: 1300 550 322

Email: sales@rack-tech.com

Melbourne Office

Office 10, Suite 18-19
79-83 High Street
Kew VIC 3101
Australia

Brisbane Office

Unit 6a, 12 Navigator Place,
Hendra QLD 4011
Australia

WAREHOUSES

Brisbane

168 Lindum Road
Lytton QLD 4178

Perth

J.G. Thomas Pty Ltd
5 Durham Road
Bayswater WA 6053

Townsville

48 Leyland Street
Garbutt QLD 4814

RACKTECHNOLOGIES.COM.AU



Rack Technologies
(Australia)



Rack-Tech AU



@RackTech

Rack Technologies is constantly developing and improving its products. All descriptions, illustrations, drawings and specifications in this publication present only general particulars and shall not form part of any contract. The right is reserved to change specifications without prior notification or public announcement. All goods supplied by the company are supplied subject to the company's General Conditions of Sale, a copy of which is available on request. All measurements are in millimetres and weights in kilograms unless otherwise stated.

